

# Anti-Superoxide Dismutase 1 Antibody (A83715)

## Specifications:

Name:	Anti-Superoxide Dismutase 1 Antibody
Description:	Goat polyclonal antibody to Superoxide Dismutase 1.
Applications:	ELISA, WB
Reactivity:	Human, Mouse, Rat, Porcine
Immunogen:	Synthetic peptide corresponding to Human SOD2 (internal region).
Sequence:	C-EAIKRDFGSFDK
Host:	Goat
Clonality:	Polyclonal
Isotype:	IgG
Conjugate:	Unconjugated
Purification:	Purified from goat serum by ammonium sulphate precipitation followed by antigen affinity chromatography using the immunizing peptide.
Concentration:	100 µg at 0.5 mg/ml.
Product Form:	Liquid
Formulation:	Supplied in Tris Buffered Saline, pH 7.30, with 0.02% Sodium Azide and 0.5% BSA.
Storage:	Shipped at 4°C. Upon delivery aliquot and store at -20°C. Avoid freeze / thaw cycles.
Disclaimer:	This product is for research use only. It is not intended for diagnostic or therapeutic use.

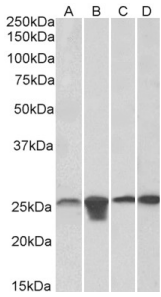
## Images:



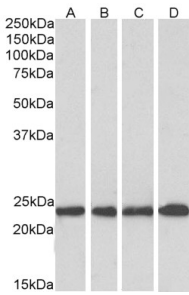
Anti-SOD2 Antibody (A83715) (0.01µg/ml) staining of Mouse (A) and Rat (B) Spinal Cord lysates (35µg protein in RIPA buffer). Primary incubation was 1 hour. Detected by chemiluminescence.

## Anti-Superoxide Dismutase 1 Antibody (A83715)

Images continued:



Anti-SOD2 Antibody (A83715) (0.1 $\mu$ g/ml) staining of HeLa, HepG2, HEK293 and NIH3T3 (35 $\mu$ g protein in RIPA buffer). Primary incubation was 1 hour. Detected by chemiluminescence.



Anti-SOD2 Antibody (A83715) (0.3 $\mu$ g/ml) staining of Human Cerebellum (A), Mouse Brain (B), Rat Brain (C) and Pig Brain (D) lysates (35 $\mu$ g protein in RIPA buffer). Primary incubation was 1 hour. Detected by chemiluminescence.