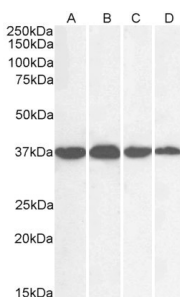


Anti-GAPDH Antibody (A83722)

Specifications:

Name:	Anti-GAPDH Antibody
Description:	Goat polyclonal antibody to GAPDH.
Applications:	ELISA, WB, IF, IHC
Reactivity:	Human, Mouse, Rat
Immunogen:	Synthetic peptide corresponding to Human GAPDH (C terminal).
Sequence:	C-HQVSSDFNSDT
Host:	Goat
Clonality:	Polyclonal
Isotype:	IgG
Conjugate:	Unconjugated
Purification:	Purified from goat serum by ammonium sulphate precipitation followed by antigen affinity chromatography using the immunizing peptide.
Concentration:	100 µg at 0.5 mg/ml.
Product Form:	Liquid
Formulation:	Supplied in Tris Buffered Saline, pH 7.30, with 0.02% Sodium Azide and 0.5% BSA.
Storage:	Shipped at 4°C. Upon delivery aliquot and store at -20°C. Avoid freeze / thaw cycles.
Disclaimer:	This product is for research use only. It is not intended for diagnostic or therapeutic use.

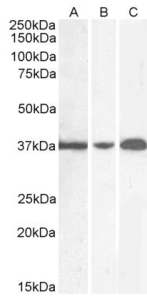
Images:



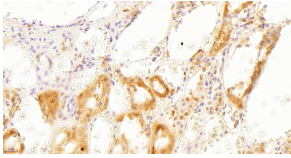
Anti-GAPDH Antibody (A83722) (0.01 µg/ml) staining of cell lines HEK293 (A) and HeLa (B) and Human Liver (C) and Tonsil (D) lysate (35 µg protein in RIPA buffer). Detected by chemiluminescence.

Anti-GAPDH Antibody (A83722)

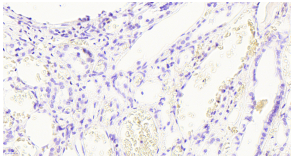
Images continued:



Anti-GAPDH Antibody (A83722) (0.01 μ g/ml) staining of Mouse Spleen (A), (0.1 μ g/ml) Rat Brain (B) and (0.5 μ g/ml) Rat Spleen (C) (35 μ g protein in RIPA buffer). Detected by chemiluminescence.



Anti-GAPDH Antibody (A83722) (2.5 μ g/ml) staining of paraffin embedded Human Kidney. Heat induced antigen retrieval with citrate buffer pH 6, HRP-staining



Anti-GAPDH Antibody (A83722) - Negative Control showing staining of paraffin embedded Human Kidney, with no primary antibody.