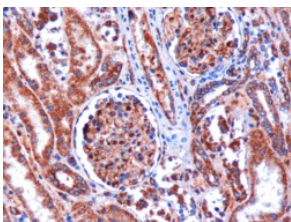


Anti-KIF5B Antibody (A83852)

Specifications:

Name:	Anti-KIF5B Antibody
Description:	Goat polyclonal antibody to KIF5B.
Applications:	ELISA, WB
Reactivity:	Human
Immunogen:	Synthetic peptide corresponding to Human KIF5B (C terminal).
Sequence:	C-QPVAVRGGGGKQV
Host:	Goat
Clonality:	Polyclonal
Isotype:	IgG
Conjugate:	Unconjugated
Purification:	Purified from goat serum by ammonium sulphate precipitation followed by antigen affinity chromatography using the immunizing peptide.
Concentration:	100 µg at 0.5 mg/ml.
Product Form:	Liquid
Formulation:	Supplied in Tris Buffered Saline, pH 7.30, with 0.02% Sodium Azide and 0.5% BSA.
Storage:	Shipped at 4°C. Upon delivery aliquot and store at -20°C. Avoid freeze / thaw cycles.
Disclaimer:	This product is for research use only. It is not intended for diagnostic or therapeutic use.

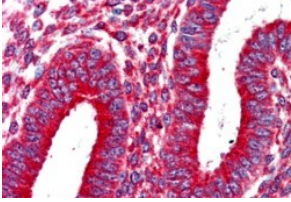
Images:



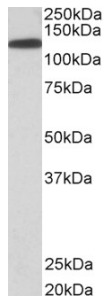
Anti-KIF5B Antibody (A83852) (1µg/ml) staining of paraffin embedded Human Kidney. Microwaved antigen retrieval with Tris/EDTA buffer pH9, HRP-staining.

Anti-KIF5B Antibody (A83852)

Images continued:



Anti-KIF5B Antibody (A83852) (2.5 μ g/ml) staining of paraffin embedded Human Uterus. Steamed antigen retrieval with citrate buffer pH 6, AP-staining.



Anti-KIF5B Antibody (A83852) (0.03 μ g/ml) staining of lysates of cell line HeLa (35 μ g protein in RIPA buffer). Primary incubation was 1 hour. Detected by chemiluminescence.