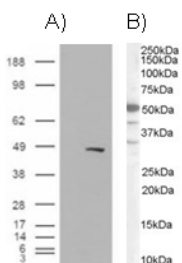


## Anti-SMARCE1 Antibody (A83953)

### Specifications:

Name:	Anti-SMARCE1 Antibody
Description:	Goat polyclonal antibody to SMARCE1.
Applications:	ELISA, WB, IHC
Reactivity:	Human
Immunogen:	Synthetic peptide corresponding to Human SMARCE1 (C terminal).
Sequence:	C-PPTDPIPEDEKKE
Host:	Goat
Clonality:	Polyclonal
Isotype:	IgG
Conjugate:	Unconjugated
Purification:	Purified from goat serum by ammonium sulphate precipitation followed by antigen affinity chromatography using the immunizing peptide.
Concentration:	100 µg at 0.5 mg/ml.
Product Form:	Liquid
Formulation:	Supplied in Tris Buffered Saline, pH 7.30, with 0.02% Sodium Azide and 0.5% BSA.
Storage:	Shipped at 4°C. Upon delivery aliquot and store at -20°C. Avoid freeze / thaw cycles.
Disclaimer:	This product is for research use only. It is not intended for diagnostic or therapeutic use.

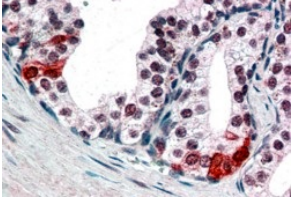
### Images:



A) HEK293 overexpressing BAF57 (RC209444) and probed with Anti-SMARCE1 Antibody (A83953) (mock transfection in first lane), tested by Origene. B) see Western Blot.

## Anti-SMARCE1 Antibody (A83953)

Images continued:



In paraffin embedded Human Prostate shows nuclear staining in secretory epithelial cells.  
Recommended concentration, 3-5 $\mu$ g/ml.