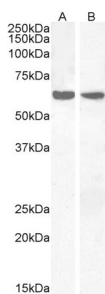


## Anti-PPP2R1A Antibody (A84078)

### Specifications:

Name:	Anti-PPP2R1A Antibody
Description:	Goat polyclonal antibody to PPP2R1A.
Applications:	ELISA, WB
Reactivity:	Human
Immunogen:	Synthetic peptide corresponding to Human PPP2R1A (C terminal).
Sequence:	C-KYFAQEALTVLSLA
Host:	Goat
Clonality:	Polyclonal
Isotype:	IgG
Conjugate:	Unconjugated
Purification:	Purified from goat serum by ammonium sulphate precipitation followed by antigen affinity chromatography using the immunizing peptide.
Concentration:	100 µg at 0.5 mg/ml.
Product Form:	Liquid
Formulation:	Supplied in Tris Buffered Saline, pH 7.30, with 0.02% Sodium Azide and 0.5% BSA.
Storage:	Shipped at 4°C. Upon delivery aliquot and store at -20°C. Avoid freeze / thaw cycles.
Disclaimer:	This product is for research use only. It is not intended for diagnostic or therapeutic use.

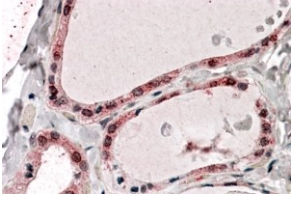
### Images:



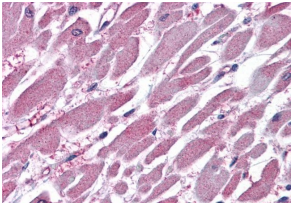
Anti-PPP2R1A Antibody (A84078) (2µg/ml) staining of Human Thymus (A) and Human Lymph node (B) lysates (35µg protein in RIPA buffer). Primary incubation was 1 hour. Detected by chemiluminescence.

## Anti-PPP2R1A Antibody (A84078)

Images continued:



Anti-PPP2R1A Antibody (A84078) (3.75 $\mu$ g/ml) staining of paraffin embedded Human Thyroid Gland. Steamed antigen retrieval with citrate buffer pH 6, AP-staining.



Anti-PPP2R1A Antibody (A84078) (3.75 $\mu$ g/ml) staining of paraffin embedded Human Heart. Steamed antigen retrieval with citrate buffer pH 6, AP-staining.