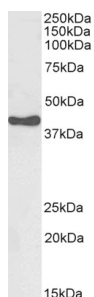


Anti-HSD3B1 Antibody (A84203)

Specifications:

Name:	Anti-HSD3B1 Antibody
Description:	Goat polyclonal antibody to HSD3B1.
Applications:	ELISA, WB, IHC
Reactivity:	Human
Immunogen:	Synthetic peptide corresponding to Human HSD3B1 (C terminal).
Sequence:	C-DRHKETLKSKTQ
Host:	Goat
Clonality:	Polyclonal
Isotype:	IgG
Conjugate:	Unconjugated
Purification:	Purified from goat serum by ammonium sulphate precipitation followed by antigen affinity chromatography using the immunizing peptide.
Concentration:	100 µg at 0.5 mg/ml.
Product Form:	Liquid
Formulation:	Supplied in Tris Buffered Saline, pH 7.30, with 0.02% Sodium Azide and 0.5% BSA.
Storage:	Shipped at 4°C. Upon delivery aliquot and store at -20°C. Avoid freeze / thaw cycles.
Disclaimer:	This product is for research use only. It is not intended for diagnostic or therapeutic use.

Images:



Anti-HSD3B1 Antibody (A84203) (0.003µg/ml) staining of Human Adrenal Gland lysate (35µg protein in RIPA buffer). Primary incubation was 1 hour. Detected by chemiluminescence.

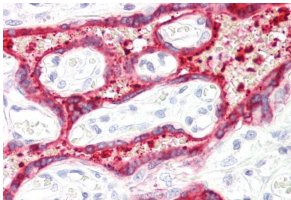
Anti-HSD3B1 Antibody (A84203)

Images continued:



250kDa
150kDa
100kDa
75kDa
50kDa
37kDa
25kDa
20kDa
15kDa
10kDa

Anti-HSD3B1 Antibody (A84203) (0.01 μ g/ml) staining of Human Placenta lysate (35 μ g protein in RIPA buffer). Primary incubation was 1 hour. Detected by chemiluminescence.



Anti-HSD3B1 Antibody (A84203) (3.75 μ g/ml) staining of paraffin embedded Human Placenta. Steamed antigen retrieval with citrate buffer pH 6, AP-staining.