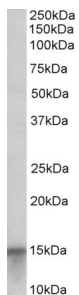


Anti-S100A7 Antibody (A84218)

Specifications:

Name:	Anti-S100A7 Antibody
Description:	Goat polyclonal antibody to S100A7.
Applications:	ELISA, WB, IHC
Reactivity:	Human
Immunogen:	Synthetic peptide corresponding to Human S100A7 (internal region).
Sequence:	C-HKYTRRDDKIDKP
Host:	Goat
Clonality:	Polyclonal
Isotype:	IgG
Conjugate:	Unconjugated
Purification:	Purified from goat serum by ammonium sulphate precipitation followed by antigen affinity chromatography using the immunizing peptide.
Concentration:	100 µg at 0.5 mg/ml.
Product Form:	Liquid
Formulation:	Supplied in Tris Buffered Saline, pH 7.30, with 0.02% Sodium Azide and 0.5% BSA.
Storage:	Shipped at 4°C. Upon delivery aliquot and store at -20°C. Avoid freeze / thaw cycles.
Disclaimer:	This product is for research use only. It is not intended for diagnostic or therapeutic use.

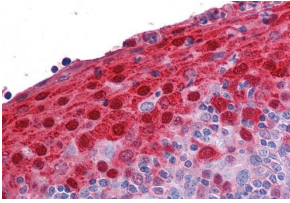
Images:



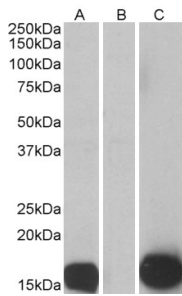
Anti-S100A7 Antibody (A84218) (0.1 µg/ml) staining of Human Skin lysate (35 µg protein in RIPA buffer). Primary incubation was 1 hour. Detected by chemiluminescence.

Anti-S100A7 Antibody (A84218)

Images continued:



Anti-S100A7 Antibody (A84218) (3.75 μ g/ml) staining of paraffin embedded Human Tonsil. Steamed antigen retrieval with citrate buffer pH 6, AP-staining.



HEK293 lysate (10 μ g protein in RIPA buffer) overexpressing Human S100A7 with C-terminal MYC tag probed with Anti-S100A7 Antibody (A84218) (0.5 μ g/ml) in Lane A and probed with anti-MYC Tag (1/1000) in lane C. Mock-transfected HEK293 probed with Anti-S100A7 Antibody (A84218) (1mg/ml) in Lane B. Primary incubations were for 1 hour. Detected by chemiluminescence.