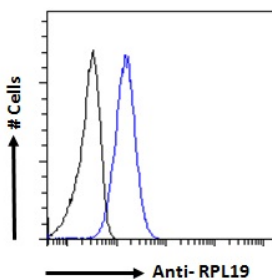


Anti-RPL19 Antibody (A84219)

Specifications:

Name:	Anti-RPL19 Antibody
Description:	Goat polyclonal antibody to RPL19.
Applications:	ELISA, FC
Reactivity:	Human
Immunogen:	Synthetic peptide corresponding to Human RPL19 (internal region).
Sequence:	C-LRRYRESKKIDRH
Host:	Goat
Clonality:	Polyclonal
Isotype:	IgG
Conjugate:	Unconjugated
Purification:	Purified from goat serum by ammonium sulphate precipitation followed by antigen affinity chromatography using the immunizing peptide.
Concentration:	100 µg at 0.5 mg/ml.
Product Form:	Liquid
Formulation:	Supplied in Tris Buffered Saline, pH 7.30, with 0.02% Sodium Azide and 0.5% BSA.
Storage:	Shipped at 4°C. Upon delivery aliquot and store at -20°C. Avoid freeze / thaw cycles.
Disclaimer:	This product is for research use only. It is not intended for diagnostic or therapeutic use.

Images:



Anti-RPL19 Antibody (A84219) - Flow cytometric analysis of paraformaldehyde fixed A431 cells (blue line), permeabilized with 0.5% Triton. Primary incubation 1hr (10µg/ml) followed by Alexa Fluor 488 secondary antibody (1µg/ml). IgG control: Unimmunized goat IgG (black line) followed by Alexa Fluor 488 secondary antibody.