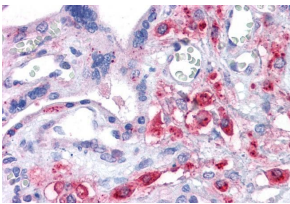


## Anti-SLC7A11 Antibody (A84265)

### Specifications:

Name:	Anti-SLC7A11 Antibody
Description:	Goat polyclonal antibody to SLC7A11.
Applications:	ELISA, WB, IHC, IF, FC
Reactivity:	Human, Rat
Immunogen:	Synthetic peptide corresponding to Human SLC7A11 (internal region).
Sequence:	C-KGQTQNFKDAFSGRD
Host:	Goat
Clonality:	Polyclonal
Isotype:	IgG
Conjugate:	Unconjugated
Purification:	Purified from goat serum by ammonium sulphate precipitation followed by antigen affinity chromatography using the immunizing peptide.
Concentration:	100 µg at 0.5 mg/ml.
Product Form:	Liquid
Formulation:	Supplied in Tris Buffered Saline, pH 7.30, with 0.02% Sodium Azide and 0.5% BSA.
Storage:	Shipped at 4°C. Upon delivery aliquot and store at -20°C. Avoid freeze / thaw cycles.
Disclaimer:	This product is for research use only. It is not intended for diagnostic or therapeutic use.

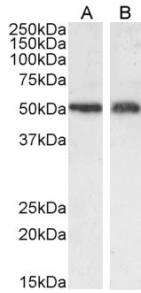
### Images:



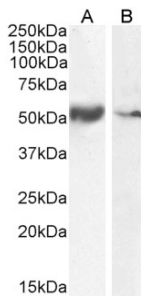
Anti-SLC7A11 Antibody (A84265) (3.75µg/ml) staining of paraffin embedded Human Placenta. Steamed antigen retrieval with citrate buffer pH 6, AP-staining.

## Anti-SLC7A11 Antibody (A84265)

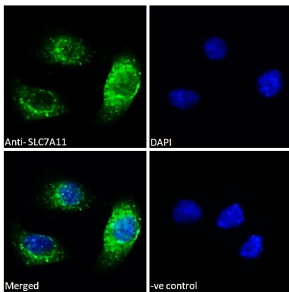
Images continued:



Anti-SLC7A11 Antibody (A84265) (0.3µg/ml) staining of A549 (A) and U2OS (B) cell lysate (35µg protein in RIPA buffer). Detected by chemiluminescence.



Anti-SLC7A11 Antibody (A84265) (0.1µg/ml) staining of Human Smooth Muscle (A) and Tonsil (B) lysate (35µg protein in RIPA buffer). Detected by chemiluminescence.



Anti-SLC7A11 Antibody (A84265) - Immunofluorescence analysis of paraformaldehyde fixed A549 cells, permeabilized with 0.15% Triton. Primary incubation 1hr (10µg/ml) followed by Alexa Fluor 488 secondary antibody (2µg/ml), showing vesicle/cytoplasmic staining.