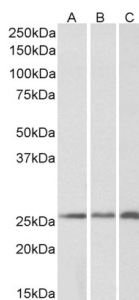


## Anti-CSR2 Antibody (A84429)

### Specifications:

|                |   |
|----------------|---|
| Name:          | Anti-CSR2 Antibody  |
| Description:   | Goat polyclonal antibody to CSR2.   |
| Applications:  | ELISA, WB, IHC  |
| Reactivity:    | Human, Mouse, Rat   |
| Immunogen:     | Synthetic peptide corresponding to Human CSR2 (internal region).  |
| Sequence:      | C-ERLGIKPESVQP  |
| Host:          | Goat  |
| Clonality:     | Polyclonal  |
| Isotype:       | IgG   |
| Conjugate:     | Unconjugated  |
| Purification:  | Purified from goat serum by ammonium sulphate precipitation followed by antigen affinity chromatography using the immunizing peptide. |
| Concentration: | 100 µg at 0.5 mg/ml.  |
| Product Form:  | Liquid  |
| Formulation:   | Supplied in Tris Buffered Saline, pH 7.30, with 0.02% Sodium Azide and 0.5% BSA.  |
| Storage:       | Shipped at 4°C. Upon delivery aliquot and store at -20°C. Avoid freeze / thaw cycles.   |
| Disclaimer:    | This product is for research use only. It is not intended for diagnostic or therapeutic use.  |

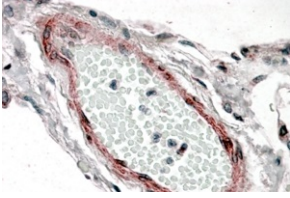
### Images:



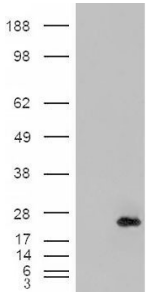
Anti-CSR2 Antibody (A84429) (0.2µg/ml) staining of Human (A), Mouse (B) and Rat (C) Kidney lysates (35µg protein in RIPA buffer). Primary incubation was 1 hour. Detected by chemiluminescence

## Anti-CSRP2 Antibody (A84429)

Images continued:



Anti-CSRP2 Antibody (A84429) (3.8µg/ml) staining of paraffin embedded Human Lung. Steamed antigen retrieval with citrate buffer pH 6, AP-staining.



HEK293 overexpressing CRP2 (RC201565) and probed with Anti-CSRP2 Antibody (A84429) (mock transfection in first lane), tested by Origene.