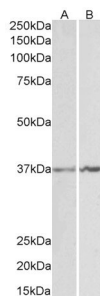


## Anti-Annexin A1 Antibody (A84638)

### Specifications:

Name:	Anti-Annexin A1 Antibody
Description:	Goat polyclonal antibody to Annexin A1.
Applications:	ELISA, WB
Reactivity:	Human, Mouse, Rat, Porcine
Immunogen:	Synthetic peptide corresponding to Human ANXA1 (C terminal).
Sequence:	CQAILDETKGDYEK
Host:	Goat
Clonality:	Polyclonal
Isotype:	IgG
Conjugate:	Unconjugated
Purification:	Purified from goat serum by ammonium sulphate precipitation followed by antigen affinity chromatography using the immunizing peptide.
Concentration:	100 µg at 0.5 mg/ml.
Product Form:	Liquid
Formulation:	Supplied in Tris Buffered Saline, pH 7.30, with 0.02% Sodium Azide and 0.5% BSA.
Storage:	Shipped at 4°C. Upon delivery aliquot and store at -20°C. Avoid freeze / thaw cycles.
Disclaimer:	This product is for research use only. It is not intended for diagnostic or therapeutic use.

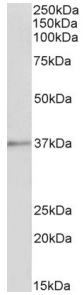
### Images:



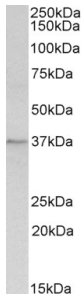
Anti-ANXA1 Antibody (A84638) (1µg/ml) staining of K562 (A) and NIH3T3 (B) lysates (35µg protein in RIPA buffer). Primary incubation was 1 hour. Detected by chemiluminescence

## Anti-Annexin A1 Antibody (A84638)

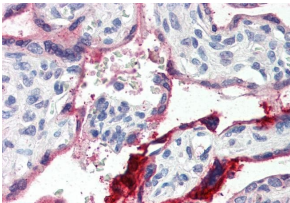
Images continued:



Anti-ANXA1 Antibody (A84638) (1 $\mu$ g/ml) staining of Pig Spleen lysate (35 $\mu$ g protein in RIPA buffer). Primary incubation was 1 hour. Detected by chemiluminescence.



Anti-ANXA1 Antibody (A84638) (1 $\mu$ g/ml) staining of Rat Spleen lysate (35 $\mu$ g protein in RIPA buffer). Primary incubation was 1 hour. Detected by chemiluminescence.



Anti-ANXA1 Antibody (A84638) (4 $\mu$ g/ml) staining of paraffin embedded Human Placenta. Steamed antigen retrieval with citrate buffer pH 6, AP-staining.