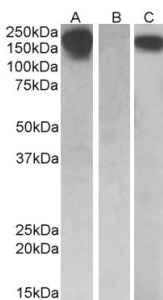


Anti-MCSF Receptor Antibody (A84857)

Specifications:

| | |
|----------------|---|
| Name: | Anti-MCSF Receptor Antibody |
| Description: | Goat polyclonal antibody to MCSF Receptor. |
| Applications: | ELISA, WB |
| Reactivity: | Human |
| Immunogen: | Synthetic peptide corresponding to Human CSF1R (internal region). |
| Sequence: | C-KNIHLEKKYVR |
| Host: | Goat |
| Clonality: | Polyclonal |
| Isotype: | IgG |
| Conjugate: | Unconjugated |
| Purification: | Purified from goat serum by ammonium sulphate precipitation followed by antigen affinity chromatography using the immunizing peptide. |
| Concentration: | 100 µg at 0.5 mg/ml. |
| Product Form: | Liquid |
| Formulation: | Supplied in Tris Buffered Saline, pH 7.30, with 0.02% Sodium Azide and 0.5% BSA. |
| Storage: | Shipped at 4°C. Upon delivery aliquot and store at -20°C. Avoid freeze / thaw cycles. |
| Disclaimer: | This product is for research use only. It is not intended for diagnostic or therapeutic use. |

Images:



HEK293 lysate (10ug protein in RIPA buffer) overexpressing Human CSF1R with C-terminal MYC tag probed with Anti-CSF1R Antibody (A84857) (0.5µg/ml) in Lane A and probed with anti-MYC Tag (1/1000) in lane C. Mock-transfected HEK293 probed with Anti-CSF1R Antibody (A84857) (1mg/ml) in Lane B. Primary incubations were for 1 hour. Detected by chemiluminescence.