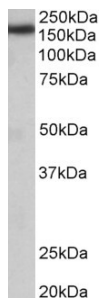


Anti-ZCCHC11 Antibody (A84989)

Specifications:

Name:	Anti-ZCCHC11 Antibody
Description:	Goat polyclonal antibody to ZCCHC11.
Applications:	ELISA, WB
Reactivity:	Mouse, Rat
Immunogen:	Synthetic peptide corresponding to Mouse Zcchc11 (internal region).
Sequence:	C-QKSAEKQGDLTPSET
Host:	Goat
Clonality:	Polyclonal
Isotype:	IgG
Conjugate:	Unconjugated
Purification:	Purified from goat serum by ammonium sulphate precipitation followed by antigen affinity chromatography using the immunizing peptide.
Concentration:	100 µg at 0.5 mg/ml.
Product Form:	Liquid
Formulation:	Supplied in Tris Buffered Saline, pH 7.30, with 0.02% Sodium Azide and 0.5% BSA.
Storage:	Shipped at 4°C. Upon delivery aliquot and store at -20°C. Avoid freeze / thaw cycles.
Disclaimer:	This product is for research use only. It is not intended for diagnostic or therapeutic use.

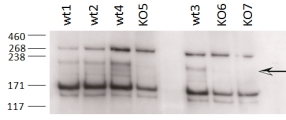
Images:



Anti-Zcchc11 Antibody (A84989) (0.05µg/ml) staining of Rat Brain lysate (35µg protein in RIPA buffer). Primary incubation was 1 hour. Detected by chemiluminescence.

Anti-ZCCHC11 Antibody (A84989)

Images continued:



Anti-Zcchc11 Antibody (A84989) (0.2 μ g/ml) staining of different Testis lysates from wildtype 8-9 week old C57BL/6 (wt) and knock-out (KO) mice (35 μ g protein in RIPA buffer). Primary incubation was 2 hours. Detected by chemiluminescence.