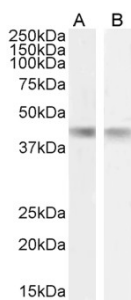


Anti-Creatine Kinase MM Antibody (A85111)

Specifications:

| | |
|----------------|---|
| Name: | Anti-Creatine Kinase MM Antibody |
| Description: | Goat polyclonal antibody to Creatine Kinase MM. |
| Applications: | ELISA, WB |
| Reactivity: | Human, Mouse, Porcine |
| Immunogen: | Synthetic peptide corresponding to Human CKM (internal region). |
| Sequence: | C-QKIEEIFKKAGHP |
| Host: | Goat |
| Clonality: | Polyclonal |
| Isotype: | IgG |
| Conjugate: | Unconjugated |
| Purification: | Purified from goat serum by ammonium sulphate precipitation followed by antigen affinity chromatography using the immunizing peptide. |
| Concentration: | 100 µg at 0.5 mg/ml. |
| Product Form: | Liquid |
| Formulation: | Supplied in Tris Buffered Saline, pH 7.30, with 0.02% Sodium Azide and 0.5% BSA. |
| Storage: | Shipped at 4°C. Upon delivery aliquot and store at -20°C. Avoid freeze / thaw cycles. |
| Disclaimer: | This product is for research use only. It is not intended for diagnostic or therapeutic use. |

Images:



Anti-Creatine Kinase MM Antibody (A85111) (1 µg/ml) staining of Mouse (A) and Rat (B) Heart lysate (35 µg protein in RIPA buffer). Detected by chemiluminescence.