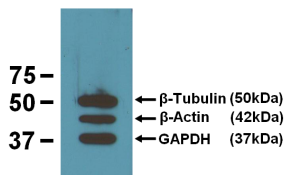


## Anti-beta Actin Antibody [BA3R] (A85272)

### Specifications:

Name:	Anti-beta Actin Antibody [BA3R]
Description:	Mouse monoclonal (BA3R) antibody to beta Actin.
Specificity:	Recognizes native and denatured forms of $\beta$ -Actin (~42kDa).
Applications:	Dot, ELISA, IS, WB
Reactivity:	Chicken, Human, Mouse, Rat, Rabbit
Immunogen:	$\beta$ -Actin N-terminal peptide-KLH conjugates.
Host:	Mouse
Clonality:	Monoclonal
Clone ID:	BA3R
Isotype:	IgG2b
Conjugate:	Unconjugated
Purification:	Protein A affinity chromatography from mouse ascites fluid.
Concentration:	1 mg/ml
Product Form:	Liquid
Formulation:	Supplied in 10mM Phosphate Buffered Saline, pH 7.20, with 0.05% Sodium Azide.
Storage:	Shipped at 4°C. Upon delivery aliquot and store at -20°C. Avoid freeze / thaw cycles.
Disclaimer:	This product is for research use only. It is not intended for diagnostic or therapeutic use.

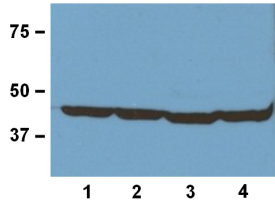
### Images:



Three of Antibodies.com loading control mAbs reacting against 10 $\mu$ g/lane of mouse brain tissue lysates. 50kDa band is Anti- $\beta$ -Tubulin (BT7R) at 1:2000 dilution (0.5 $\mu$ g/mL); 42kDa band is Anti- $\beta$ -Actin (BA3R) at 1:1000 dilution (1 $\mu$ g/mL); 37kDa band is Anti-GAPDH (GA1R) at 1:5000 dilution (0.2 $\mu$ g/mL).

## Anti-beta Actin Antibody [BA3R] (A85272)

Images continued:



1:1000 (1 $\mu$ g/mL) Ab dilution used in WB of 20 $\mu$ g/lane tissue lysates from human (1), mouse (2), rat (3), and rabbit (4).