

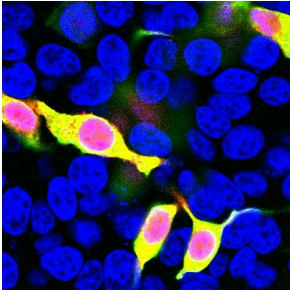
## Anti-mCherry Antibody (A85306)

### Specifications:

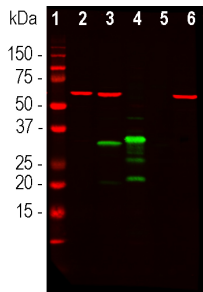
Name:	Anti-mCherry Antibody
Description:	Rabbit polyclonal antibody to mCherry.
Applications:	WB, ICC/IF, IHC
Recommended Dilutions:	WB: 1:2,000, ICC/IF: 1:500, IHC: 1:500
Immunogen:	Recombinant full-length mCherry, expressed in and purified from E. coli.
Sequence:	MVSKGEEDNMAIIKEFMRFKVMHEGVSNGHEFEIEGEGEGRPYEGTQTAKLKVTKGGP LPFAWDILSPQFMYGSKAYVKHPADIPDYLKLSFPEGFKWERVMNFEDGGVVTVTQDS SLQDGEFIYKVKLRGTNFPDGPVMQKKTMGWEASSERMYPEDGALKGEIKQRLKDKD GGHYDAEVKTTYKAKKPVQLPGAYNvNIKLDITSHNEDYTIVEQYERAEGRHSTGGMD ELYK
Host:	Rabbit
Clonality:	Polyclonal
Isotype:	IgG
Conjugate:	Unconjugated
Purification:	Immunogen affinity purification.
Concentration:	1 mg/ml
Molecular Weight:	28 kDa
Product Form:	Liquid
Formulation:	Supplied in Phosphate Buffered Saline with 50% Glycerol and 5mM Sodium Azide.
Storage:	Shipped at 4°C. Upon delivery aliquot and store at -20°C. Avoid freeze / thaw cycles.
General Notes:	This antibody can be used to verify the size of fusion constructs by western blotting, and to amplify the endogenous fluorescence of mCherry in transfected cells.
Disclaimer:	This product is for research use only. It is not intended for diagnostic or therapeutic use.

## Anti-mCherry Antibody (A85306)

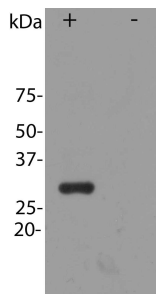
### Images:



HEK293 cells transfected in the same way and viewed using a confocal microscope. Most HEK293 cells are not transfected so only the nucleus of these cells can be visualized with a blue DNA stain. Cells which are transfected with mCherry are red. Staining with Anti-mCherry Antibody is shown in Green. Green antibody staining is only seen in cells which express mCherry, as expected, and the superimposition of the green and red signals results in an orange signal. Interestingly, stronger mCherry staining is seen in the nucleus, possibly due to degradation of some mCherry molecules to release the low molecular weight mCherry fluorochrome.



Western blot analysis of HEK293 cell lysates, and recombinant protein solutions using Anti-mCherry Antibody (A85306), at a dilution of 1:1,000, in green. The lanes contain samples of: [1] Protein standards, [2] HEK293 cells, [3] HEK293 cells transfected with an mCherry-HA construct, [4] mCherry recombinant protein, [5] GFP recombinant protein, and [6] HEK293 cells transfected with a full-length GFP construct. A major band at about 28 kDa corresponds to mCherry protein. The Anti-mCherry Antibody (A85306) does not react with GFP protein. The same blot was simultaneously probed with Anti-Heat Shock Protein 60 Antibody (A85438), at a dilution of 1:5,000, in red, which shows a band at 60 kDa as a positive loading control, for the cell lysates only.



Blot of HEK293 cells transfected with pFin-EF1-mCherry vector, in the lane marked "+". HEK293 cells which were not transfected with this vector show no protein band in lane marked "-".