

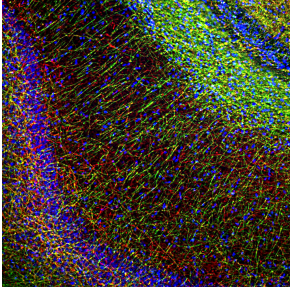
## Anti-Myelin Basic Protein Antibody [7G7] (A85322)

### Specifications:

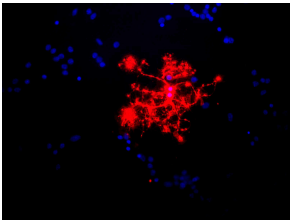
|                        |                                                                                                                                                                                                                                                                                                                                                                                                                                                                                                                                                                                                                             |
|------------------------|-----------------------------------------------------------------------------------------------------------------------------------------------------------------------------------------------------------------------------------------------------------------------------------------------------------------------------------------------------------------------------------------------------------------------------------------------------------------------------------------------------------------------------------------------------------------------------------------------------------------------------|
| Name:                  | Anti-Myelin Basic Protein Antibody [7G7]                                                                                                                                                                                                                                                                                                                                                                                                                                                                                                                                                                                    |
| Description:           | Mouse monoclonal (7G7) antibody to Myelin Basic Protein.                                                                                                                                                                                                                                                                                                                                                                                                                                                                                                                                                                    |
| Specificity:           | This antibody binds all four of the CNS Myelin Basic Protein isoforms; with the epitope mapped to peptide TPPPSQGKG, amino acids 125-133 of the human 21.5 kDa sequence, with the last four amino acids, SQGKG, likely to be key elements of the epitope. This antibody can be used to identify oligodendrocytes and Schwann cells in neural cell culture, to visualize myelin sheaths and myelinating cells in sectioned material, and to probe western blots for MBP gene products. This antibody is also rather insensitive to aldehyde fixation and therefore can be used in immunohistochemistry of paraffin sections. |
| Applications:          | WB, ICC/IF, IHC                                                                                                                                                                                                                                                                                                                                                                                                                                                                                                                                                                                                             |
| Recommended Dilutions: | WB: 1:10,000-1:20,000, ICC/IF: 1:2,000-1:5,000, IHC: 1:2,000-1:5,000                                                                                                                                                                                                                                                                                                                                                                                                                                                                                                                                                        |
| Reactivity:            | Human, Horse, Bovine, Porcine, Rat, Mouse                                                                                                                                                                                                                                                                                                                                                                                                                                                                                                                                                                                   |
| Immunogen:             | Native Myelin Basic Protein isolated and purified from bovine brain.                                                                                                                                                                                                                                                                                                                                                                                                                                                                                                                                                        |
| Host:                  | Mouse                                                                                                                                                                                                                                                                                                                                                                                                                                                                                                                                                                                                                       |
| Clonality:             | Monoclonal                                                                                                                                                                                                                                                                                                                                                                                                                                                                                                                                                                                                                  |
| Clone ID:              | 7G7                                                                                                                                                                                                                                                                                                                                                                                                                                                                                                                                                                                                                         |
| Isotype:               | IgG1                                                                                                                                                                                                                                                                                                                                                                                                                                                                                                                                                                                                                        |
| Conjugate:             | Unconjugated                                                                                                                                                                                                                                                                                                                                                                                                                                                                                                                                                                                                                |
| Purification:          | Immunogen affinity purification.                                                                                                                                                                                                                                                                                                                                                                                                                                                                                                                                                                                            |
| Concentration:         | 1 mg/ml                                                                                                                                                                                                                                                                                                                                                                                                                                                                                                                                                                                                                     |
| Molecular Weight:      | Rodents: 14 kDa, 17 kDa, 18.5 kDa, 21.5 kDa. Human: 17.2 kDa, 18.5 kDa, 20.5 kDa, 21.5 kDa.                                                                                                                                                                                                                                                                                                                                                                                                                                                                                                                                 |
| Product Form:          | Liquid                                                                                                                                                                                                                                                                                                                                                                                                                                                                                                                                                                                                                      |
| Formulation:           | Supplied in Phosphate Buffered Saline with 50% Glycerol and 5mM Sodium Azide.                                                                                                                                                                                                                                                                                                                                                                                                                                                                                                                                               |
| Storage:               | Shipped at 4°C. Upon delivery aliquot and store at -20°C. Avoid freeze / thaw cycles.                                                                                                                                                                                                                                                                                                                                                                                                                                                                                                                                       |
| Disclaimer:            | This product is for research use only. It is not intended for diagnostic or therapeutic use.                                                                                                                                                                                                                                                                                                                                                                                                                                                                                                                                |

## Anti-Myelin Basic Protein Antibody [7G7] (A85322)

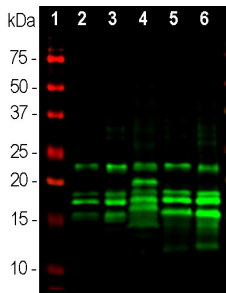
### Images:



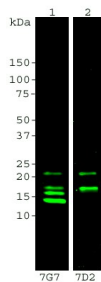
Immunofluorescent analysis of rat hippocampal section stained with Anti-MBP Antibody (1:5,000 | green) and Anti-NF-H Antibody (A85336 | 1:2,000 | red). The Anti-MBP Antibody stains oligodendrocyte cell bodies and the myelin sheath around axons, while the Anti-NF-H Antibody labels the axons themselves.



Rat mixed neuron/glia cultures stained with Anti-MBP Antibody (red). Blue is a DNA stain. Note that the Anti-MBP Antibody stains an oligodendrocyte and some membrane shed from this cell. Other cells in the field include neurons, astrocytes, microglia and fibroblasts, all of which are completely negative.



Western blot analysis of different tissue lysates using Anti-MBP Antibody (1:20,000 | green): [1] protein standard (red), [2] rat brain, [3] rat spinal cord, [4] rat sciatic nerve, [5] mouse brain, [6] mouse spinal cord. Multiple bands at 14kDa, 17kDa, 18.5kDa to 21.5kDa are the alternate transcripts of MBP. Other bands are proteolytic fragments of the MBP protein.



Blots of 20µg crude rat brain homogenate blotted with two different MBP antibodies. Lane 1: Anti-MBP Antibody (A85322 | 1:5,000). Lane 2: Anti-MBP Antibody (A85329 | 1:5,000). Anti-MBP Antibody (A85322) binds all four transcripts: 21.5kDa, 18.5kDa, 17kDa and 14kDa. While Anti-MBP Antibody (A85329) binds the largest 21.5 kDa and 18.5 kDa transcripts preferentially.