

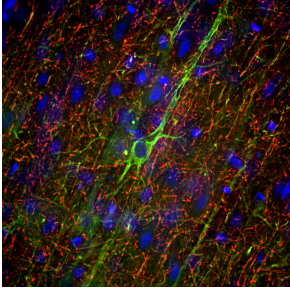
## Anti-NF-M Antibody [3H11] (A85325)

### Specifications:

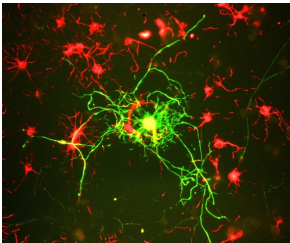
Name:	Anti-NF-M Antibody [3H11]
Description:	Mouse monoclonal (3H11) antibody to NF-M.
Specificity:	The epitope for this antibody was mapped using protein cleavage to the extreme C-terminal sequence, amino acids 762-845, of rat NF-M. This epitope corresponds to amino acids 833-916 of the slightly larger human NF-M sequence.
Applications:	WB, ICC/IF, IHC
Recommended Dilutions:	WB: 1:5,000, ICC/IF: 1:2,000, IHC: 1:2,000
Reactivity:	Human, Horse, Cow, Porcine, Chicken, Rat, Mouse
Immunogen:	Recombinant fusion protein containing the extreme C-terminus, amino acids 677-845, of rat NF-M, expressed in and purified from E. coli
Host:	Mouse
Clonality:	Monoclonal
Clone ID:	3H11
Isotype:	IgG1
Conjugate:	Unconjugated
Purification:	Immunogen affinity purification.
Concentration:	1 mg/ml
Molecular Weight:	145-160 kDa
Product Form:	Liquid
Formulation:	Supplied in Phosphate Buffered Saline with 50% Glycerol and 5mM Sodium Azide.
Storage:	Shipped at 4°C. Upon delivery aliquot and store at -20°C. Avoid freeze / thaw cycles.
Disclaimer:	This product is for research use only. It is not intended for diagnostic or therapeutic use.

## Anti-NF-M Antibody [3H11] (A85325)

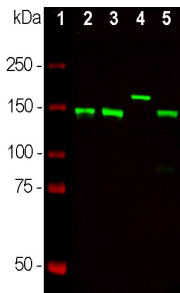
### Images:



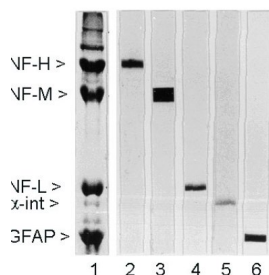
Immunofluorescence analysis of adult rat frontal cortex section stained with Anti-NF-M Antibody (1:5,000 | green) and Anti-NF-H Antibody (A85337 | 1:5,000 | red). Following transcardial perfusion of rat with 4% paraformaldehyde, brain was post fixed for 24 hours, cut to 45µM, and free-floating sections were stained with the above antibodies. Anti-NF-M Antibody labels neuron cell bodies and dendrites of pyramidal neurons, as well as dendrites and axons of other neuronal cells, while the Anti-NF-H Antibody stains the network of neuronal axons only.



Culture of adult neural cells. Mature neurons can be identified by their morphology and because they stain strongly with antibodies to NF-L, NF-M and NF-H. The surrounding stellate red cells are stained with Anti-Alpha-Internexin Antibody (A85441). These are mitotic neuronal progenitor cells and express many other neuronal markers.



Western blot analysis of neuronal tissue lysates using Anti-NF-M Antibody (1:10,000 | green): [1] protein standard (red), [2] rat spinal cord, [3] mouse spinal cord, [4] cow spinal cord, [5] rat sciatic nerve. Strong bands at ~145 kDa corresponds to rodent NF-M while that at about 160 kDa corresponds to the significantly larger bovine NF-M protein.



Rat spinal cord homogenate showing the major intermediate filament proteins of the nervous system (Lane 1). The remaining lanes show blots of this material stained with various antibodies including Anti-NF-M Antibody (Lane 3).