

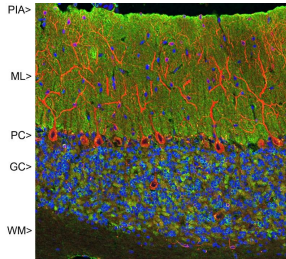
Anti-Visinin Like Protein 1 Antibody [2D11] (A85345)

Specifications:

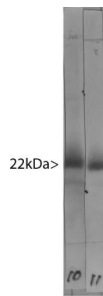
Name:	Anti-Visinin Like Protein 1 Antibody [2D11]
Description:	Mouse monoclonal (2D11) antibody to Visinin Like Protein 1.
Applications:	WB, ICC/IF, IHC
Recommended Dilutions:	WB: 1:500-1:1,000, ICC/IF: 1:500-1:1,000, IHC: 1:500-1:1,000
Reactivity:	Human, Rat, Mouse
Immunogen:	Recombinant full-length human Visinin-like Protein 1, expressed in and purified from E. coli.
Host:	Mouse
Clonality:	Monoclonal
Clone ID:	2D11
Isotype:	IgG1
Conjugate:	Unconjugated
Purification:	Immunogen affinity purification.
Concentration:	1 mg/ml
Molecular Weight:	18 kDa
Product Form:	Liquid
Formulation:	Supplied in Phosphate Buffered Saline with 50% Glycerol and 5mM Sodium Azide.
Storage:	Shipped at 4°C. Upon delivery aliquot and store at -20°C. Avoid freeze / thaw cycles.
Disclaimer:	This product is for research use only. It is not intended for diagnostic or therapeutic use.

Anti-Visinin Like Protein 1 Antibody [2D11] (A85345)

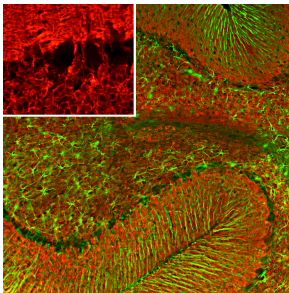
Images:



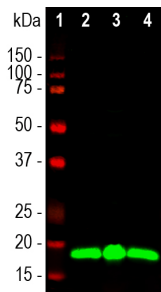
Confocal image of adult rat cerebellum stained with Anti-Visinin Like Protein 1 Antibody (green), Anti-MAP2 Antibody (A85363 | red) and DNA (blue). The Anti-Visinin Like Protein 1 Antibody reveals perikarya and synaptic regions in the neuron rich granular layer (bottom) and synapse rich molecular layer (top). Note that the large prominent Purkinje neurons at the junction of these two layers do not stain with this antibody.



Western blot of bovine cerebellum homogenate stained with Anti-Visinin Like Protein 1 Antibody in Lane 10. Note the strong clean band running at 22 kDa. Lane 11 shows the same material stained with Anti-Visinin Like Protein 1 Antibody (A85346) which binds to the same band.



Immunofluorescent analysis of rat cerebellum section stained with Anti-Visinin Like Protein 1 Antibody [2D11] (A85345), at a dilution of 1:500, in red. The tissue was co-stained with Anti-GFAP Antibody (A85419), at a dilution of 1:5,000, in green. Following transcathal perfusion of the rat with 4% paraformaldehyde, the brain was post-fixed for 24 hours, cut to 45 μ m, and free-floating sections were stained with the above antibodies. The Anti-Visinin Like Protein 1 Antibody [2D11] (A85345) reveals protein expressed in granule cell membranes and in synapses in the white matter and molecular layers of the cerebellum. The Anti-GFAP Antibody (A85419) stains the processes of Bergmann glia and astroglia.



Western blot analysis of different tissue lysates using Anti-Visinin Like Protein 1 Antibody [2D11] (A85345), at a dilution of 1:1,000, in green. The lanes contain samples of: [1] Protein standards, in red, [2] rat brain, [3] rat cerebellum, and [4] mouse brain. The band at approximately 20 kDa corresponds to the VLP1 protein.