

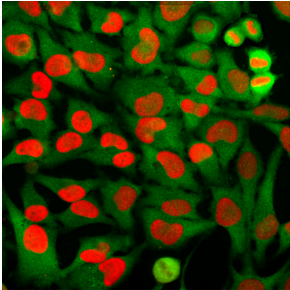
## Anti-HMGB1 Antibody [1F3] (A85355)

### Specifications:

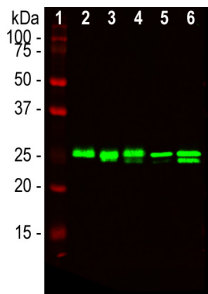
Name:	Anti-HMGB1 Antibody [1F3]
Description:	Mouse monoclonal [1F3] antibody to HMGB1.
Applications:	WB, ICC/IF, IHC
Recommended Dilutions:	WB: 1:1,000-1:2,000, ICC/IF: 1:1,000, IHC: 1:1,000
Reactivity:	Human, Rat, Mouse
Immunogen:	Full-length recombinant human HMGB1 protein, expressed in and purified from E. coli.
Host:	Mouse
Clonality:	Monoclonal
Clone ID:	1F3
Isotype:	IgG2b
Conjugate:	Unconjugated
Purification:	Immunogen affinity purification.
Concentration:	1 mg/ml
Molecular Weight:	25 kDa
Product Form:	Liquid
Formulation:	Supplied in Phosphate Buffered Saline with 50% Glycerol and 5mM Sodium Azide.
Storage:	Shipped at 4°C. Upon delivery aliquot and store at -20°C. Avoid freeze / thaw cycles.
General Notes:	The HMGB1 protein is normally located in the nucleus where it associates with chromatin and DNA and, as such, this antibody is a useful nuclear marker.
Disclaimer:	This product is for research use only. It is not intended for diagnostic or therapeutic use.

## Anti-HMGB1 Antibody [1F3] (A85355)

### Images:



Immunofluorescent analysis of HeLa cells stained with Anti-HMGB1 Antibody [1F3] (A85355), dilution 1:2,000, in red and co-stained with Anti-GAPDH Antibody (A85377), dilution 1:2,000 in green. Anti-HMGB1 Antibody [1F3] stains the chromatin binding protein HMGB1, which is localized in the nuclei. In contrast the Anti-GAPDH Antibody produces strong cytoplasmic staining of cells.



Western blot analysis of lysates from different cell lines probed with Anti-HMGB1 Antibody [1F3] (A85355), dilution 1:2,000. The lanes contain: [1] protein standard, [2] NIH-3T3, [3] C6, [4] HEK293, [5] HeLa, and [6] SH-SY5Y cell lysates. The 25 kDa band revealed by Anti-HMGB1 Antibody [1F3] corresponds to the HMGB1 protein.