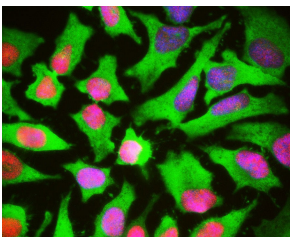


Anti-HSP27 Antibody (A85356)

Specifications:

Name:	Anti-HSP27 Antibody
Description:	Chicken polyclonal antibody to HSP27.
Applications:	WB, ICC/IF, IHC
Recommended Dilutions:	WB: 1:2,000-1:5,000, ICC/IF: 1:1,000, IHC: 1:1,000
Reactivity:	Human
Cross Reactivity:	This antibody does not cross-react with rodent.
Immunogen:	Recombinant full-length human HSP27, expressed in and purified from E. coli.
Host:	Chicken
Clonality:	Polyclonal
Isotype:	IgY
Conjugate:	Unconjugated
Molecular Weight:	27 kDa
Purity:	IgY preparation.
Product Form:	Liquid
Formulation:	Supplied as an aliquot of IgY preparation with 5mM Sodium Azide.
Disclaimer:	This product is for research use only. It is not intended for diagnostic or therapeutic use.

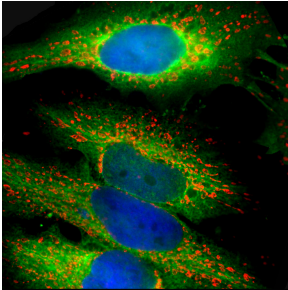
Images:



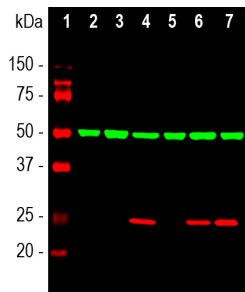
HeLa cells stained with Anti-Heat Shock Protein 27 Antibody (green), Anti-HMGB1 Antibody (A85355 | red) and DNA (blue). Anti-Heat Shock Protein 27 Antibody reveals strong cytoplasmic staining and penetrates into the actin rich ruffled margins, while the Anti-HMGB1 Antibody reveals strong nuclear staining which overlaps with the DNA staining.

Anti-HSP27 Antibody (A85356)

Images continued:



Immunofluorescent analysis of HeLa cells stained with Anti-Heat Shock Protein 27 Antibody (A85356), at a dilution of 1:1,000, in green, and co-stained with Anti-Heat Shock Protein 60 Antibody (A85439) at a dilution of 1:5,000 in red. Blue is DAPI staining of nuclear DNA. The Anti-Heat Shock Protein 27 Antibody (A85356) produces strong cytoplasmic staining, while the Anti-Heat Shock Protein 60 Antibody (A85439) specifically labels mitochondria.



Western blot analysis of whole cell lysates using Anti-Heat Shock Protein 27 Antibody (A85356), at a dilution of 1:2,000, in red. The lanes contain samples of: [1] Protein standards, in red, [2] NIH-3T3 cells, [3] C6 cells, [4] HeLa cells, [5] HEK293 cells, [6] SH-SY5Y cells, and [7] COS-1 cells. The strong single band at 27 kDa corresponds to Heat Shock Protein 27, which is strongly expressed in human cell lines. Note that the antibody does not recognize rodent Heat Shock Protein 27. The blot was simultaneously probed with Anti-beta Tubulin Antibody (A85428), at a dilution of 1:10,000, in green. A single band at 50 kDa, which is detected in all cell lysates, corresponds to the beta Tubulin proteins.



Blot of HeLa cell crude extracts blotted with Anti-Heat Shock Protein 27 Antibody. Note the strong clean bands at 27kDa corresponding to HSP27.