

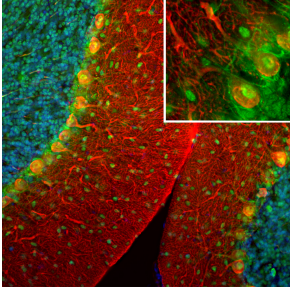
## Anti-Secretagogin Antibody (A85357)

### Specifications:

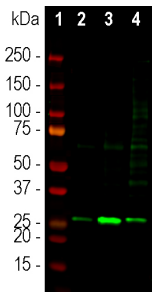
Name:	Anti-Secretagogin Antibody
Description:	Rabbit polyclonal antibody to Secretagogin.
Applications:	WB, ICC/IF, IHC
Recommended Dilutions:	WB: 1:1,000-1:5,000, ICC/IF: 1:1,000-1:2,000, IHC: 1:1,000-1:2,000
Reactivity:	Human, Rat, Mouse
Immunogen:	Recombinant full-length human Secretagogin protein, expressed in and purified from E. coli.
Host:	Rabbit
Clonality:	Polyclonal
Isotype:	IgG
Conjugate:	Unconjugated
Purification:	Immunogen affinity purification.
Concentration:	1 mg/ml
Molecular Weight:	27 kDa
Product Form:	Liquid
Formulation:	Supplied in Phosphate Buffered Saline with 50% Glycerol and 5mM Sodium Azide.
Storage:	Shipped at 4°C. Upon delivery aliquot and store at -20°C. Avoid freeze / thaw cycles.
Disclaimer:	This product is for research use only. It is not intended for diagnostic or therapeutic use.

## Anti-Secretagogin Antibody (A85357)

### Images:



Immunofluorescent analysis of a rat brain cerebellum section stained with Anti-Secretagogin Antibody (A85357), dilution 1:1,000, in green, and co-stained with Anti-Calbindin Antibody (A85360), dilution 1:1,000, in red. The blue is DAPI staining of nuclear DNA. Following transcardial perfusion with 4% paraformaldehyde, the brain was post-fixed for 24 hours, cut to 45  $\mu\text{m}$ , and free-floating sections were stained with the above antibodies. Anti-Secretagogin Antibody stains granule cells and interneurons while calbindin antibody reveals proteins expressed in dendrites and perikarya of Purkinje cells in the molecular layer of the cerebellum.



Western blot analysis of different tissue lysates using Anti-Secretagogin Antibody (A85357), dilution 1:1,000, in green. The lanes contain: [1] protein standard (red), [2] rat pancreas, [3] rat olfactory bulb, and [4] mouse olfactory bulb lysates. Bands at  $\sim 27$  kDa correspond to secretagogin protein.