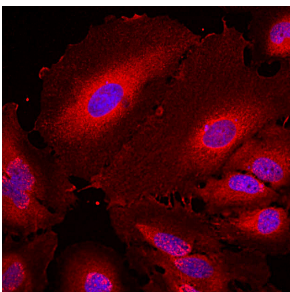


## Anti-14-3-3 eta Antibody [3G12] (A85361)

### Specifications:

Name:	Anti-14-3-3 eta Antibody [3G12]
Description:	Mouse monoclonal (3G12) antibody to 14-3-3 eta.
Applications:	WB, ICC/IF, IHC
Recommended Dilutions:	WB: 1:5,000, ICC/IF: 1:1,000, IHC: 1:1,000
Reactivity:	Human, Bovine, Porcine, Canine, Rat, Mouse
Immunogen:	Recombinant full-length human 14-3-3 eta protein, expressed in and purified from E. coli.
Host:	Mouse
Clonality:	Monoclonal
Clone ID:	3G12
Isotype:	IgG1
Conjugate:	Unconjugated
Purification:	Immunogen affinity purification.
Concentration:	1 mg/ml
Molecular Weight:	28 kDa
Product Form:	Liquid
Formulation:	Supplied in Phosphate Buffered Saline with 50% Glycerol and 5mM Sodium Azide.
Storage:	Shipped at 4°C. Upon delivery aliquot and store at -20°C. Avoid freeze / thaw cycles.
Disclaimer:	This product is for research use only. It is not intended for diagnostic or therapeutic use.

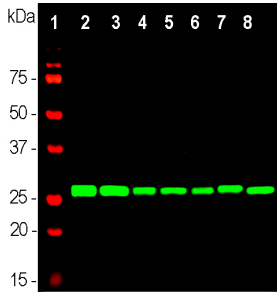
### Images:



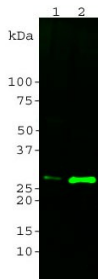
Immunofluorescent analysis of HeLa cells stained with Anti-14.3.3 eta Antibody (1:1,000 | red). Blue is DAPI staining of nuclear DNA. The Anti-14.3.3 eta Antibody reveals the diffuse cytoplasmic distribution of 14.3.3? protein with higher concentration in the perinuclear region.

## Anti-14-3-3 eta Antibody [3G12] (A85361)

Images continued:



Western blot analysis of whole brain lysates (Lanes 2 & 3) and cell lysates (Lanes 4-8) using Anti-14.3.3 eta Antibody (1:5,000 | green): [1] protein standard (red), [2] rat brain, [3] mouse brain, [4] NIH-3T3, [5] HEK293, [6] HeLa, [7] SH-SY5Y, [8] C6 cells. Strong band at 28kDa corresponds to 14.3.3? protein, expressed in all preparations.



Blot of 20 $\mu$ g crude HeLa cell homogenate (lane 1) and 20 $\mu$ g rat brain lysate (lane2) was probed with Anti-14.3.3 eta Antibody (1:2500). The Anti-14.3.3 eta Antibody recognizes 14.3.3? at about 28 kDa in both HeLa cell and rat brain lysates. 14.3.3? is more abundant in rat brain than in HeLa cells.