

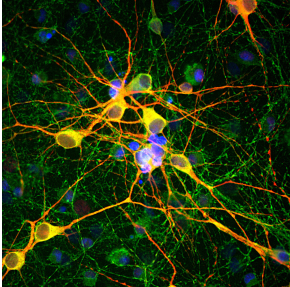
Anti-MAP2 Antibody (A85363)

Specifications:

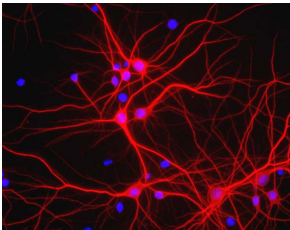
Name:	Anti-MAP2 Antibody
Description:	Chicken polyclonal antibody to MAP2.
Specificity:	This antibody only recognizes the high molecular weight MAP2 isoforms, MAP2A and MAP2B. The lower molecular weight MAP2 isoforms, MAP2C and MAP2D, are expressed earlier in neuronal development, so expression of the higher molecular weight isoforms indicates a later stage in neuronal maturity.
Applications:	WB, ICC/IF, IHC
Recommended Dilutions:	WB: 1:20,000-1:50,000, ICC/IF: 1:5,000-1:10,000, IHC: 1:5,000-1:10,000
Reactivity:	Human, Rat, Mouse
Immunogen:	Mixture of recombinant human constructs of MAP2 Projection Domain P1, MAP2 Projection Domain P2, and MAP2 Projection Domain P3, corresponding to amino acids 377-1505.
Host:	Chicken
Clonality:	Polyclonal
Isotype:	IgY
Conjugate:	Unconjugated
Molecular Weight:	~280 kDa (by SDS-PAGE)
Purity:	IgY preparation.
Product Form:	Liquid
Formulation:	Supplied as an aliquot of concentrated IgY preparation with 5mM Sodium Azide.
Storage:	Shipped at 4°C. Store at +4°C. Do Not Freeze!
Disclaimer:	This product is for research use only. It is not intended for diagnostic or therapeutic use.

Anti-MAP2 Antibody (A85363)

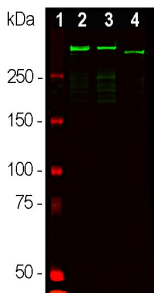
Images:



Immunofluorescent analysis of cortical neuron-glia cell culture from E20 rat stained with Anti-MAP2 Antibody (1:10,000 | red) and Anti-Tau, MAPT Antibody (A85416 | 1:2,000 | green). The blue is DAPI staining of nuclear DNA. The Anti-MAP2 Antibody stains dendrites and perikarya of neurons, while the Anti-Tau, MAPT Antibody labels neuronal perikarya, dendrites and also axonal process. As a result perikarya and dendrites appears orange-yellow, since they contain both MAP2 and tau, while axons are green.



View of mixed neuron/glia cultures stained with Anti-MAP2 Antibody (red). The perikarya and dendrites of neurons are strongly and specifically stained with the Anti-MAP2 Antibody, while the axons of the neurons and the processes of all other cell types in these cultures (astrocytes, oligodendrocytes, microglia, endothelia and fibroblasts) are all negative. Cell nuclei are visualized with DAPI DNA stain.



Western blot analysis of whole brain tissue lysates using Anti-MAP2 Antibody (1:50,000 | green): [1] protein standard (red), [2] adult rat brain, [3] embryonic E20 rat brain, [4] adult mouse brain. Strong band at about 280 kDa mark corresponds to two major isoforms of MAP2 protein referred to as MAP2A and MAP2B. Smaller fragments of these isoforms are also detected if the antibody is used at higher concentrations. This antibody was raised against the “projection domain” sequences which are not found in MAP2C and MAP2D, and so this antibody does not recognize these isotypes.