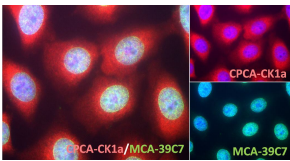


## Anti-Casein Kinase 1 alpha Antibody (A85378)

### Specifications:

Name:	Anti-Casein Kinase 1 alpha Antibody
Description:	Chicken polyclonal antibody to Casein Kinase 1 alpha.
Applications:	WB, ICC/IF, IHC
Recommended Dilutions:	WB: 1:10,000, ICC/IF: 1:500-1:1,000
Reactivity:	Human, Horse, Cow, Porcine, Chicken, Rat, Mouse
Immunogen:	Recombinant full-length Casein Kinase 1 alpha (shortest isoform), expressed in and purified from <i>E. coli</i> .
Host:	Chicken
Clonality:	Polyclonal
Isotype:	IgY
Conjugate:	Unconjugated
Molecular Weight:	38 kDa
Purity:	IgY preparation.
Product Form:	Liquid
Formulation:	Supplied as an aliquot of IgY preparation with 5mM Sodium Azide.
Disclaimer:	This product is for research use only. It is not intended for diagnostic or therapeutic use.

### Images:



Immunofluorescent image of HeLa cells stained with Anti-Casein Kinase 1 Alpha Antibody (red) and Anti-Nuclear Pore Complex Antibody (A85460 | green). Casein kinase 1 alpha has a particulate distribution both in the nucleus and the cytoplasm. Blue is the Hoechst DNA stain.

## Anti-Casein Kinase 1 alpha Antibody (A85378)

Images continued:



Western blot of whole rat spinal cord homogenate stained with Anti-Casein Kinase 1 Alpha Antibody (1:10,000). A prominent band running with an apparent SDS-PAGE molecular weight of ~38kDa corresponds to CK1 alpha and a less prominent band at ~34kDa corresponds to other CK1 alpha isotypes.