

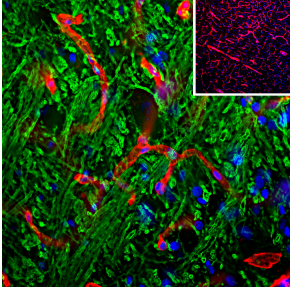
## Anti-Laminin Antibody (A85395)

### Specifications:

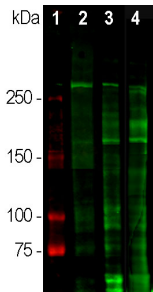
Name:	Anti-Laminin Antibody
Description:	Rabbit polyclonal antibody to Laminin.
Applications:	WB, ICC/IF, IHC
Recommended Dilutions:	WB: 1:5,000, ICC/IF: 1:1,000-1:5,000, IHC: 1:1,000-1:5,000
Reactivity:	Human, Rat, Mouse
Immunogen:	Laminin 111 isolated biochemically from mouse Engelbreth-Holm-Swarm (EHS) sarcoma cells.
Host:	Rabbit
Clonality:	Polyclonal
Isotype:	IgG
Conjugate:	Unconjugated
Purification:	Immunogen affinity purification.
Concentration:	1 mg/ml
Molecular Weight:	440 kDa, 220 kDa, 158 kDa
Product Form:	Liquid
Formulation:	Supplied in Phosphate Buffered Saline with 50% Glycerol and 5mM Sodium Azide.
Storage:	Shipped at 4°C. Upon delivery aliquot and store at -20°C. Avoid freeze / thaw cycles.
General Notes:	This antibody is a very useful reagent for visualizing basal lamina in mature and developing tissues. It is also particularly useful in the CNS, allowing visualization of the basal lamina of endothelia, an important part of the blood brain barrier.
Disclaimer:	This product is for research use only. It is not intended for diagnostic or therapeutic use.

## Anti-Laminin Antibody (A85395)

### Images:



Immunohistological analysis of brain stem section stained with Anti-Laminin Antibody (A85395), dilution 1:1,000, in red, and co-stained with Anti-MBP Antibody (A85321), dilution 1:5,000, in green. The blue is DAPI staining of nuclear DNA. Following transcatheter perfusion of rat with 4% paraformaldehyde, the brain was post-fixed for 24 hours, cut to 45  $\mu\text{m}$ , and free-floating sections were stained with the above antibodies. The laminin antibody is an excellent marker of basement membranes surrounding blood vessels, while the MBP antibody stains the myelin sheathes around axons.



Western blot analysis of different tissue lysates using Anti-Laminin Antibody (A85395), dilution 1:5,000 in green. The lanes contain: [1] protein standard (red), [2] rat brain, [3] rat spinal cord, and [4] cow spinal cord lysate. The strong band above the 280 kDa mark corresponds to full length laminin proteins. Smaller proteolytic fragments of laminin are also detected with this antibody.