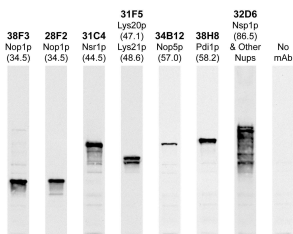


Anti-Lys20p + Lys21p Antibody [31F5] (A85407)

Specifications:

Name:	Anti-Lys20p + Lys21p Antibody [31F5]
Description:	Mouse monoclonal (31F5) antibody to Lys20p and Lys21p.
Specificity:	This antibody shows equally specificity to Lys20p and Lys21p.
Applications:	WB, ICC/IF, IHC
Recommended Dilutions:	WB: 1:10,000-1:50,000, ICC/IF: 1:1,000-1:10,000, IHC: 1:1,000-1:10,000
Reactivity:	Saccharomyces cerevisiae
Immunogen:	Yeast nucleolus enriched fraction.
Host:	Mouse
Clonality:	Monoclonal
Clone ID:	31F5
Isotype:	IgG1
Conjugate:	Unconjugated
Molecular Weight:	47.1 kDa (Lys20p) and 48.6 kDa (Lys21p).
Purity:	Tissue culture supernatant.
Product Form:	Liquid
Formulation:	Supplied as an aliquot of concentrated hybridoma cell culture media with 5mM Sodium Azide.
Storage:	Shipped at 4°C. Upon delivery aliquot and store at -20°C. Avoid freeze / thaw cycles.
Disclaimer:	This product is for research use only. It is not intended for diagnostic or therapeutic use.

Images:



Western blots of whole yeast protein extracts with a collection of our antibodies. The blot for Anti-Lys20p and Lys21p Antibody is in the indicated lane, and the number indicates the SDS-PAGE molecular weight in kiloDaltons.