

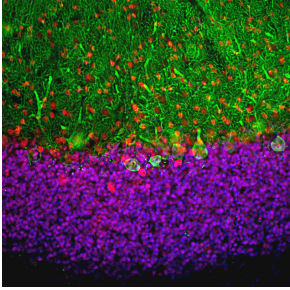
## Anti-MeCP2 Antibody (A85427)

### Specifications:

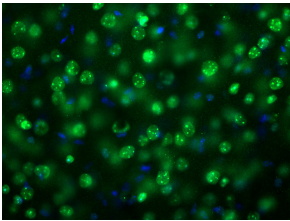
Name:	Anti-MeCP2 Antibody
Description:	Rabbit polyclonal antibody to MeCP2.
Applications:	WB, ICC/IF, IHC
Recommended Dilutions:	WB: 1:10,000-1:20,000, ICC/IF: 1:2,000, IHC: 1:2,000
Reactivity:	Human, Rat, Mouse, Monkey
Immunogen:	Recombinant full-length human MeCP2, expressed in and purified from E. coli.
Host:	Rabbit
Clonality:	Polyclonal
Isotype:	IgG
Conjugate:	Unconjugated
Purification:	Immunogen affinity purification.
Concentration:	1 mg/ml
Molecular Weight:	70-75 kDa (by SDS-PAGE)
Product Form:	Liquid
Formulation:	Supplied in Phosphate Buffered Saline with 50% Glycerol and 5mM Sodium Azide.
Storage:	Shipped at 4°C. Upon delivery aliquot and store at -20°C. Avoid freeze / thaw cycles.
Disclaimer:	This product is for research use only. It is not intended for diagnostic or therapeutic use.

## Anti-MeCP2 Antibody (A85427)

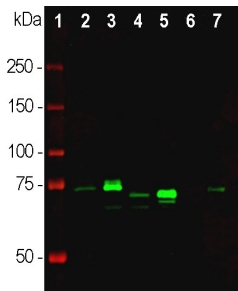
### Images:



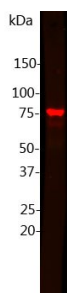
Immunofluorescent analysis of rat cerebellum section co-stained with Anti-MeCP2 Antibody (1:5,000 | red) and Anti-Calbindin Antibody (A85359 | 1:2,000 | green). Blue is DAPI staining of nuclear DNA. Following transcardial perfusion with 4% paraformaldehyde, brain was post fixed for 24 hours, cut to 45  $\mu$ M, and free-floating sections were stained with the above antibodies. The Anti-MeCP2 Antibody selectively stains nuclei of neuronal cells. Calbindin, often used as Purkinje cell marker, is prominently expressed in dendrites and perikarya of these cells in the cerebellar molecular layer.



Mouse brain section, which was cut at 45 $\mu$ m on a vibratome after perfusion with 4% paraformaldehyde and overnight fixation, was stained with Anti-MeCP2 Antibody. MeCP2 was mainly associated with methylated DNA in nucleus of neuron cells (green). Blue shows DAPI staining of nuclear DNA.



Western blot analysis of tissue and cell lysates using Anti-MeCP2 Antibody (1:20,000 | green): [1] protein standard (red), [2] Rat whole brain, [3] nuclear fraction of rat brain, [4] mouse whole brain, [5] nuclear fraction of mouse brain, [6] HeLa cells, [7] C6 cells. Major band at about 70-75 kDa corresponds to MeCP2 protein, predominantly detected in the nuclear fraction of the lysates. The apparent molecular weights of MeCP2 based on SDS-PAGE mobility are variable between species and higher than the actual MeCP2 molecular weight which is ~54kDa.



Western blot analysis of MeCP2 expression in nuclear extracts from mouse brain with Anti-MeCP2 Antibody. This antibody recognises a strong and clear band at 75 kDa corresponding to total MeCP2 of mouse brain in SDS-PAGE, while molecular weight of MeCP2 protein is 54 kDa.