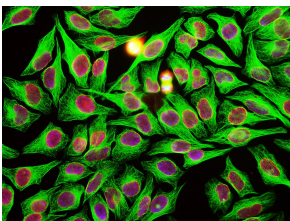


Anti-beta Tubulin Antibody [1B12] (A85428)

Specifications:

Name:	Anti-beta Tubulin Antibody [1B12]
Description:	Mouse monoclonal (1B12) antibody to beta Tubulin.
Specificity:	This antibody reacts with recombinant beta Tubulin but not recombinant alpha Tubulin by ELISA and dot blots.
Applications:	WB, ICC/IF, IHC
Recommended Dilutions:	WB: 1:5,000-1:10,000, ICC/IF: 1:5,000
Reactivity:	Human, Monkey, Rat, Mouse
Immunogen:	Pig brain tubulin preparation.
Host:	Mouse
Clonality:	Monoclonal
Clone ID:	1B12
Isotype:	IgG2b
Conjugate:	Unconjugated
Purification:	Immunogen affinity purification.
Concentration:	1 mg/ml
Molecular Weight:	50 kDa
Product Form:	Liquid
Formulation:	Supplied in Phosphate Buffered Saline with 50% Glycerol and 5mM Sodium Azide.
Storage:	Shipped at 4°C. Upon delivery aliquot and store at -20°C. Avoid freeze / thaw cycles.
Disclaimer:	This product is for research use only. It is not intended for diagnostic or therapeutic use.

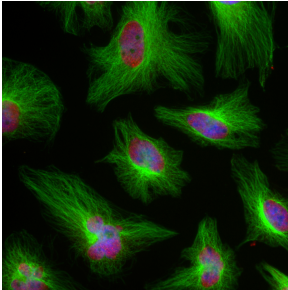
Images:



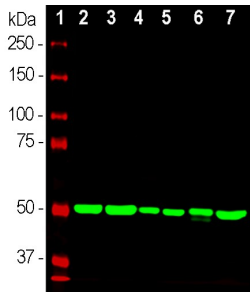
HeLa cells stained with Anti-Beta Tubulin Antibody (green), Anti-Lamin A/C Antibody (A85443 | red) and DNA in blue. Anti-Beta Tubulin Antibody reveals strong microtubular staining in the cytoplasm of HeLa cells, while the Anti-Lamin A/C Antibody localizes in the nuclear membrane.

Anti-beta Tubulin Antibody [1B12] (A85428)

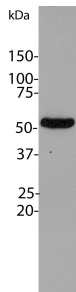
Images continued:



Immunofluorescent analysis of HeLa cells stained with Anti-Beta Tubulin Antibody (1:5,000 | green) and Anti-FOX2 Antibody (1:1,000 | red). Blue is DAPI staining of nuclear DNA. Anti-Beta Tubulin Antibody produces strong staining of microtubules in the cytoplasm, while the Anti-FOX2 Antibody labels the nuclei of HeLa cells.



Western blot analysis of whole tissue or cell lysates using Anti-Beta Tubulin Antibody (1:10,000 | green): [1] protein standard (red), [2] adult rat brain, [3] adult mouse brain, [4] NIH-3T3 cells, [5] HEK293 cells, [6] HeLa cells, [7] SH-SY5Y cells. The strong clean band with apparent SDS-PAGE molecular weight of ~50 kDa corresponds to β -tubulin proteins.



Blot of HeLa cell lysates probed with Anti-Beta Tubulin Antibody. Note the single sharp clean band corresponding to β -tubulin at 55 kDa.