

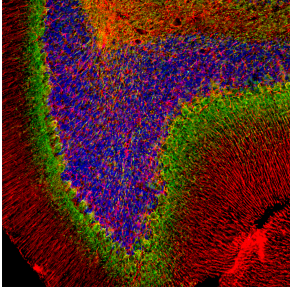
## Anti-alpha Internexin Antibody (A85441)

### Specifications:

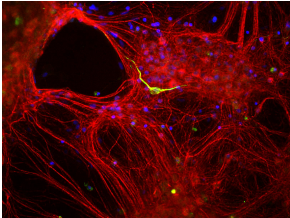
Name:	Anti-alpha Internexin Antibody
Description:	Rabbit polyclonal antibody to alpha Internexin.
Applications:	WB, ICC/IF, IHC
Recommended Dilutions:	WB: 1:10,000-1:20,000, ICC/IF: 1:500-1:1,000, IHC: 1:500-1:1,000
Reactivity:	Human, Horse, Bovine, Porcine, Rat, Mouse
Immunogen:	Recombinant full-length rat alpha Internexin, expressed in and purified from E. coli.
Host:	Rabbit
Clonality:	Polyclonal
Isotype:	IgG
Conjugate:	Unconjugated
Molecular Weight:	64-66 kDa (by SDS-PAGE)
Purity:	Whole antiserum.
Product Form:	Liquid
Formulation:	Supplied as an aliquot of serum with 5mM Sodium Azide.
Storage:	Shipped at 4°C. Upon delivery aliquot and store at -20°C. Avoid freeze / thaw cycles.
Disclaimer:	This product is for research use only. It is not intended for diagnostic or therapeutic use.

## Anti-alpha Internexin Antibody (A85441)

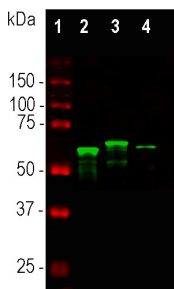
### Images:



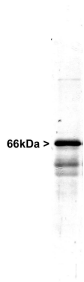
Immunofluorescent analysis of rat cerebellum section stained with Anti-Alpha-Internexin Antibody (1:2,000 | green) and Anti-GFAP Antibody (A85307 | 1:5,000 | red). Blue is DAPI staining of nuclear DNA. Following transcardial perfusion with 4% paraformaldehyde, brain was post fixed for 24 hours, cut to 45  $\mu$ M, and free-floating sections were stained with the above antibodies. The Anti-Alpha-Internexin Antibody selectively stains axons and dendrites of neuronal cells, in particular Purkinje cells and parallel fibers the axons of granule cells. The Anti-GFAP Antibody labels network of glial cells, such as astrocytes in the granule cell layer and white matter and Bergmann glia in the molecular layer.



Mixed neuron-glia cultures stained with Anti-Alpha-Internexin Antibody (red) and Anti-Peripherin Antibody (A85435 | green). The Anti-Alpha-Internexin Antibody stains numerous axonal and dendritic profiles in these cultures, while Anti-Peripherin Antibody binds to only a subset of neurons.



Western blot analysis of whole tissue lysates using Anti-Alpha-Internexin Antibody (1:10,000 | green): [1] protein standard (red), [2] mouse spinal cord, [3] rat spinal cord, [4] bovine spinal cord. Major bands in the 64-66 kDa range corresponds to  $\alpha$ -internexin. The  $\alpha$ -internexin protein from different species is known to vary slightly in SDS-PAGE molecular weight.



Western blot of whole rat spinal cord homogenate stained with Anti-Alpha-Internexin Antibody (1:20,000). A prominent band running at  $\sim$ 66 kDa is apparent, as well as smaller lower bands which are apparently degradation products. A minor band at  $\sim$ 150 kDa is also seen, apparently resulting from dimerization of alpha-internexin.