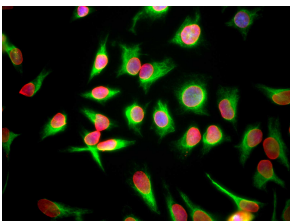


## Anti-Lamin A + Lamin C Antibody [4C4] (A85444)

### Specifications:

Name:	Anti-Lamin A + Lamin C Antibody [4C4]
Description:	Mouse monoclonal (4C4) antibody to Lamin A + Lamin C.
Applications:	WB, ICC/IF
Recommended Dilutions:	WB: 1:1,000-1:2,000, ICC/IF: 1:1,000
Reactivity:	Human
Immunogen:	Recombinant full-length human Lamin A, expressed in and purified from E. coli.
Host:	Mouse
Clonality:	Monoclonal
Clone ID:	4C4
Isotype:	IgG1
Conjugate:	Unconjugated
Purification:	Immunogen affinity purification.
Concentration:	1 mg/ml
Molecular Weight:	65 kDa, 74 kDa
Product Form:	Liquid
Formulation:	Supplied in Phosphate Buffered Saline with 50% Glycerol and 5mM Sodium Azide.
Storage:	Shipped at 4°C. Upon delivery aliquot and store at -20°C. Avoid freeze / thaw cycles.
Disclaimer:	This product is for research use only. It is not intended for diagnostic or therapeutic use.

### Images:



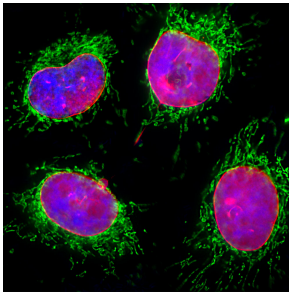
HeLa cells staining with Anti-Lamin A/C Antibody (red), Anti-Vimentin Antibody (A85421 | green) and DAPI (DNA) (blue). The Anti-Lamin A/C Antibody antibody reveals strong nuclear lamina staining, while the Anti-Vimentin Antibody reveals cytoplasmic intermediate filaments.

## Anti-Lamin A + Lamin C Antibody [4C4] (A85444)

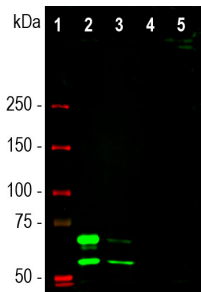
Images continued:



Strip blots of crude HeLa cell extract stained with Anti-Lamin A/C Antibody. Note two strong clean bands at 74 kDa and 64 kDa, corresponding to Lamin A and C, in Lane 6. Lane 5 was stained with Anti-Enolase 1 Antibody (A85406). Lanes 3 and 4 were stained with Anti-Actin Antibody (A85388). Molecular weights of each protein are as indicated.



Immunofluorescent analysis of HeLa cells stained with Anti-Lamin A + C Antibody [4C4] (A85444), at a dilution of 1:2,000 in red, and co-stained with Anti-Heat Shock Protein 60 Antibody (A85437), at a dilution of 1:5,000, in green. The nuclear DNA is visualised in blue using Hoechst staining. Anti-Lamin A + C Antibody [4C4] (A85444) specifically labels the nuclear lamina, while the Anti-Heat Shock Protein 60 Antibody (A85437) reveals protein expressed in mitochondria.



Western blot analysis of different cell lysates using Anti-Lamin A + C Antibody [4C4] (A85444), at a dilution of 1:1,000, in green. The lanes contain samples of: [1] Protein standards, in red, [2] HeLa cells, [3] HEK293 cells [4] C6 cells, and [5] NIH-3T3 cell lysates. Two strong bands at 74 kDa and 65 kDa correspond to the Lamin A and Lamin C proteins respectively, detected only in the cells of human origin. The Anti-Lamin A + C Antibody [4C4] (A85444) failed to recognize rat or mouse proteins.