

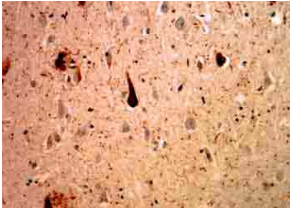
Anti-Ubiquitin Antibody [Ubi-1] (A85456)

Specifications:

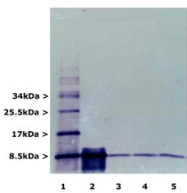
Name:	Anti-Ubiquitin Antibody [Ubi-1]
Description:	Mouse monoclonal (Ubi-1) antibody to Ubiquitin.
Specificity:	The epitope for this antibody is located in the peptide IQDKEGIPPDQQRLIFAGKQ, amino acids 30-49 of bovine Ubiquitin, with the central 10 amino acid segment, GIPPDQQRLI, likely to be the most significant component of this antibodies epitope.
Applications:	WB, ICC/IF, IHC
Recommended Dilutions:	WB: 1:1,000-1:2,000, ICC/IF: 1:2,000, IHC: 1:2,000
Reactivity:	Human, Monkey, Horse, Bovine, Porcine, Chicken, Rat, Mouse, Danio, Drosophila, Caenorhabditis elegans
Immunogen:	Purified bovine erythrocyte Ubiquitin, coupled to KLH with glutaraldehyde.
Host:	Mouse
Clonality:	Monoclonal
Clone ID:	Ubi-1
Isotype:	IgG1
Conjugate:	Unconjugated
Purification:	Immunogen affinity purification.
Concentration:	1 mg/ml
Molecular Weight:	8.5 kDa (monoubiquitin)
Product Form:	Liquid
Formulation:	Supplied in Phosphate Buffered Saline with 50% Glycerol and 5mM Sodium Azide.
Storage:	Shipped at 4°C. Upon delivery aliquot and store at -20°C. Avoid freeze / thaw cycles.
Disclaimer:	This product is for research use only. It is not intended for diagnostic or therapeutic use.

Anti-Ubiquitin Antibody [Ubi-1] (A85456)

Images:



Anti-Ubiquitin Antibody staining of cerebral cortex of an Alzheimer patient. Neurofibrillary tangles and dystrophic neurites associated with senile plaques stain strongly with this antibody. In the center is a typical neurofibrillary tangle containing neuron.



Blots of mono and polyubiquitin (Lane 1), monoubiquitin only (Lane 2), and 100 µg total wet weight of cerebellum, cortex and brain stem respectively (Lane 3-5) were probed with Anti-Ubiquitin Antibody. Material was run out on 20% SDS-PAGE and transferred electrophoretically to PVDF.