

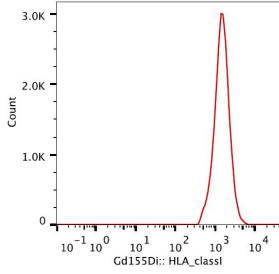
Anti-HLA Class I Antibody [W6/32] (A85488)

Specifications:

Name:	Anti-HLA Class I Antibody [W6/32]
Description:	Mouse monoclonal [W6/32] antibody to HLA Class I.
Specificity:	The antibody W6/32 recognises MHC Class I molecules (MHC Class Ia) that are expressed on the surface of all human nucleated cell types. The antibody W6/32 is a valuable reagent for analysing variations in HLA class I expression in different disease states e.g. liver disease, muscular dystrophy, inflammatory myopathy and other neuromuscular disorders. This antibody W6/32 is also suitable as a positive control for HLA tissue typing and crossmatching.
Applications:	Flow Cytometry, IP, WB, IHC-Fr, ICC, ELISA, CyTOF
Recommended Dilutions:	Flow Cytometry: 1-12 µg/ml
Reactivity:	Human, Bovine, Feline, Non-Human Primates
Immunogen:	Membrane of human tonsil cells.
Host:	Mouse
Clonality:	Monoclonal
Clone ID:	W6/32
Isotype:	IgG2a
Conjugate:	Unconjugated
Purification:	Protein A chromatography.
Concentration:	1 mg/ml
Purity:	> 95% (by SDS-PAGE).
Product Form:	Liquid
Formulation:	Supplied in Phosphate Buffered Saline, pH 7.4, with 15 mM Sodium Azide.
Storage:	Shipped at 4°C. Upon delivery aliquot and store at -20°C. Avoid freeze / thaw cycles.
Disclaimer:	This product is for research use only. It is not intended for diagnostic or therapeutic use.

Anti-HLA Class I Antibody [W6/32] (A85488)

Images:



Surface staining (mass cytometry) of PBMC after Ficoll-Paque separation with Anti-HLA Class I Antibody (A85488). Gated on DNA.