

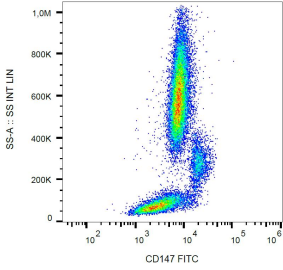
Anti-CD147 Antibody [MEM-M6/1] (FITC) (A85527)

Specifications:

Name:	Anti-CD147 Antibody [MEM-M6/1] (FITC)
Description:	Mouse monoclonal [MEM-M6/1] antibody to CD147 (FITC).
Specificity:	This antibody recognizes an extracellular epitope in the N terminal Ig domain of CD147, a 50-60 kDa type I transmembrane glycoprotein primarily expressed on all leukocytes, red blood cells, platelets, and endothelial cells. It is not expressed by resting lymphocytes. This antibody is a high-affinity antibody capable of binding to unstimulated peripheral blood T cells.
Applications:	Flow Cytometry
Recommended Dilutions:	Flow Cytometry: This reagent is designed for analysis of human blood cells using 20 µl reagent / 100 µl of whole blood or 10 ⁶ cells in a suspension.
Reactivity:	Human
Immunogen:	Protein A-CR purified soluble recombinant form of CD147, CD147Rg, which consists of the cDNA coding for the hinge region, CH2-and CH3 domain of human IgG1 (CD147Rg is secreted by transfectants as a dimer).
Host:	Mouse
Clonality:	Monoclonal
Clone ID:	MEM-M6/1
Isotype:	IgG1
Conjugate:	FITC
Purification:	This antibody is conjugated with FITC under optimum conditions. The conjugate is purified by size-exclusion chromatography.
Product Form:	Liquid
Formulation:	Supplied in Phosphate Buffered Saline with 15 mM Sodium Azide.
Storage:	Store in the dark at 2-8°C. Do not freeze!
Disclaimer:	This product is for research use only. It is not intended for diagnostic or therapeutic use.

Anti-CD147 Antibody [MEM-M6/1] (FITC) (A85527)

Images:



Surface staining of human peripheral blood with Anti-CD147 Antibody (A85527).