

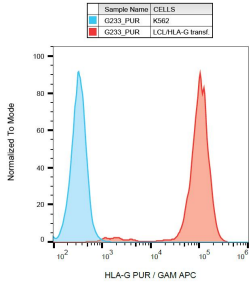
Anti-HLA G Antibody [G233] (A85532)

Specifications:

Name:	Anti-HLA G Antibody [G233]
Description:	Mouse monoclonal [G233] antibody to HLA G.
Specificity:	The antibody G233 recognizes several isoforms of HLA-G expressed in all populations of extravillous trophoblast (cell columns, interstitial trophoblast, endovascular trophoblast, placental bed giant cells). HLA-G belongs to the nonclassical MHC Class I molecules (MHC Class Ib). The antibody G233 has been found not to cross-react with any other MHC Class I antigens (HLA-A, -B, -C, -E, -F).
Applications:	Flow Cytometry, IP, ELISA
Recommended Dilutions:	Flow Cytometry: 1-4 µg/ml
Reactivity:	Human
Immunogen:	HLA-A2.1/human beta2-microglobulin double transgenic mice were immunized with murine L cells transfected with both human beta2-microglobulin and HLA-G.
Host:	Mouse
Clonality:	Monoclonal
Clone ID:	G233
Isotype:	IgG2a
Conjugate:	Unconjugated
Purification:	Protein A chromatography.
Concentration:	1 mg/ml
Purity:	> 95% (by SDS-PAGE).
Product Form:	Liquid
Formulation:	Supplied in Phosphate Buffered Saline, pH 7.4, with 15 mM Sodium Azide.
Storage:	Shipped at 4°C. Upon delivery aliquot and store at -20°C. Avoid freeze / thaw cycles.
Disclaimer:	This product is for research use only. It is not intended for diagnostic or therapeutic use.

Anti-HLA G Antibody [G233] (A85532)

Images:



Surface staining of HLA-G in HLA-G transfectants using Anti-HLA G Antibody (A85532).