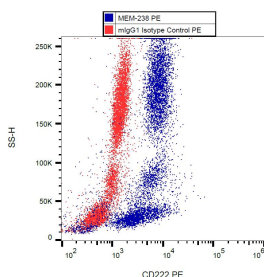


## Anti-CD222 Antibody [MEM-238] (PE) (A85552)

### Specifications:

Name:	Anti-CD222 Antibody [MEM-238] (PE)
Description:	Mouse monoclonal [MEM-238] antibody to CD222 (PE).
Specificity:	This antibody recognizes an extracellular epitope of CD4 antigen, a 55 kDa transmembrane glycoprotein expressed on a subset of T lymphocytes ("helper" T-cells) and also on monocytes, tissue macrophages, and granulocytes.
Applications:	Flow Cytometry
Recommended Dilutions:	Flow Cytometry: This reagent is designed for analysis of human blood cells using 20 $\mu$ l reagent / 100 $\mu$ l of whole blood or $10^6$ cells in a suspension.
Reactivity:	Human, Non-Human Primates
Immunogen:	Recombinant Vaccinia virus encoding CD222.
Host:	Mouse
Clonality:	Monoclonal
Clone ID:	MEM-238
Isotype:	IgG1
Conjugate:	PE
Purification:	This antibody is conjugated with PE under optimum conditions. The conjugate is purified by size-exclusion chromatography.
Product Form:	Liquid
Formulation:	Supplied in Phosphate Buffered Saline with 15 mM Sodium Azide.
Storage:	Store in the dark at 2-8°C. Do not freeze!
Disclaimer:	This product is for research use only. It is not intended for diagnostic or therapeutic use.

### Images:



Intracellular staining of human peripheral blood with Anti-CD222 Antibody (A85552).