

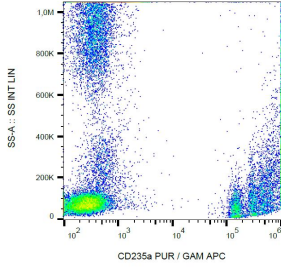
Anti-Glycophorin A Antibody [JC159] (A85569)

Specifications:

Name:	Anti-Glycophorin A Antibody [JC159]
Description:	Mouse monoclonal [JC159] antibody to Glycophorin A.
Specificity:	This antibody recognizes an extracellular epitope, between amino acids 27-40, of CD235a, a sialoglycoprotein expressed on early erythroblasts, late erythroblasts, erythroblasts, mature erythrocytes, and the cells of erythroid cell lines K562 and HEL. This antibody does not react with Glycophorin B.
Applications:	Flow Cytometry, IHC-P, IHC-Fr
Recommended Dilutions:	IHC-P: 10 µg/ml, Flow Cytometry: 1-4 µg/ml
Reactivity:	Human, Rat
Immunogen:	Membrane preparation from splenic hairy cell leukemia.
Host:	Mouse
Clonality:	Monoclonal
Clone ID:	JC159
Isotype:	IgG1
Conjugate:	Unconjugated
Purification:	Protein A chromatography.
Concentration:	1 mg/ml
Purity:	> 95% (by SDS-PAGE).
Product Form:	Liquid
Formulation:	Supplied in Phosphate Buffered Saline, pH 7.4, with 15 mM Sodium Azide.
Storage:	Shipped at 4°C. Upon delivery aliquot and store at -20°C. Avoid freeze / thaw cycles.
Disclaimer:	This product is for research use only. It is not intended for diagnostic or therapeutic use.

Anti-Glycophorin A Antibody [JC159] (A85569)

Images:



Surface staining of CD235a in human peripheral blood (erythrocytes and leukocytes) with Anti-CD235a Antibody (A85569).