

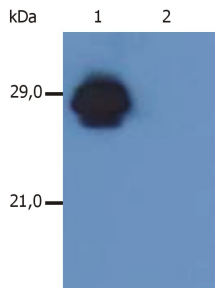
## Anti-HLA DR + HLA DP Antibody [MEM-136] (A85630)

### Specifications:

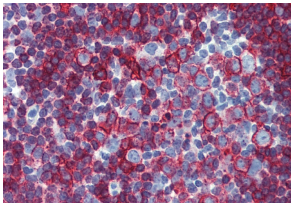
Name:	Anti-HLA DR + HLA DP Antibody [MEM-136]
Description:	Mouse monoclonal [MEM-136] antibody to HLA DR + HLA DP.
Specificity:	This antibody recognizes a common extracellular epitope on beta chain of human HLA DR and HLA DP. It reacts with alpha/beta dimer as well as with dissociated beta subunit. DR and DP are the isotypes of human MHC Class II molecules expressed on antigen-presenting cells (APC, dendritic cells, B lymphocytes, monocytes, and macrophages).
Applications:	IP, WB, IHC-P, Flow Cytometry
Recommended Dilutions:	Flow Cytometry: 1-4 µg/ml
Reactivity:	Human
Immunogen:	PHA-activated peripheral blood lymphocytes.
Host:	Mouse
Clonality:	Monoclonal
Clone ID:	MEM-136
Isotype:	IgG1
Conjugate:	Unconjugated
Purification:	Protein A chromatography.
Concentration:	1 mg/ml
Purity:	> 95% (by SDS-PAGE).
Product Form:	Liquid
Formulation:	Supplied in Phosphate Buffered Saline, pH 7.4, with 15 mM Sodium Azide.
Storage:	Shipped at 4°C. Upon delivery aliquot and store at -20°C. Avoid freeze / thaw cycles.
Disclaimer:	This product is for research use only. It is not intended for diagnostic or therapeutic use.

## Anti-HLA DR + HLA DP Antibody [MEM-136] (A85630)

### Images:



Western Blotting analysis of MHC Class II in whole cell lysate of RAJI human Burkitt lymphoma cell line using Anti-HLA DR + DP Antibody (A85630). Anti-HLA DR + DP Antibody (A85630) recognizes  $\beta$ -chain of HLA-DR antigen under non-reducing conditions. Lane 1: Immunostaining with Anti-HLA DR + DP Antibody (A85630). Lane 2: Immunostaining with Isotype mouse IgG1 control (PPV-06).



Immunohistochemistry staining of human small intestine (paraffin-embedded sections) with Anti-HLA DR + DP Antibody (A85630).