

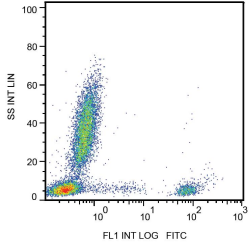
## Anti-CD20 Antibody [2H7] (FITC) (A85691)

### Specifications:

Name:	Anti-CD20 Antibody [2H7] (FITC)
Description:	Mouse monoclonal [2H7] antibody to CD20 (FITC).
Specificity:	This antibody recognizes an extracellular epitope on CD20, a 33-37 kDa non-glycosylated membrane receptor with four transmembrane domains, expressed on pre-B lymphocytes, resting and activated B cells (not plasma cells), follicular dendritic cells, and at low levels on peripheral blood T lymphocytes.
Applications:	Flow Cytometry
Recommended Dilutions:	Flow Cytometry: This reagent is designed for analysis of human blood cells using 20 µl reagent / 100 µl of whole blood or 10 <sup>6</sup> cells in a suspension.
Reactivity:	Human, Non-Human Primates
Immunogen:	Human tonsillar B cells.
Host:	Mouse
Clonality:	Monoclonal
Clone ID:	2H7
Isotype:	IgG2b
Light Chains:	kappa
Conjugate:	FITC
Purification:	This antibody is conjugated with FITC under optimum conditions. The conjugate is purified by size-exclusion chromatography.
Product Form:	Liquid
Formulation:	Supplied in Phosphate Buffered Saline with 15 mM Sodium Azide.
Storage:	Store in the dark at 2-8°C. Do not freeze!
Disclaimer:	This product is for research use only. It is not intended for diagnostic or therapeutic use.

## Anti-CD20 Antibody [2H7] (FITC) (A85691)

Images:



Surface staining of human peripheral blood with Anti-CD20 Antibody (A85691).