

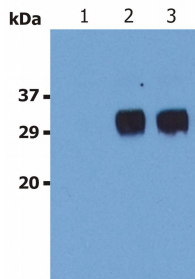
## Anti-LST1 Antibody [LST1/02] (A85783)

### Specifications:

Name:	Anti-LST1 Antibody [LST1/02]
Description:	Mouse monoclonal [LST1/02] antibody to LST1.
Specificity:	The antibody LST1/02 reacts with an extracellular epitope of LST1, an approximately 6-11 kDa protein expressed as various transmembrane or soluble forms. LST1 is found predominantly on monocytes and dendritic cells. It migrates on SDS PAGE gels as approximately 25-28 kDa molecule.
Applications:	IP, WB, ICC
Reactivity:	Human
Immunogen:	KLH-fused peptide corresponding to amino acids SSEGPDLRGRDKRGT of human LST1.
Host:	Mouse
Clonality:	Monoclonal
Clone ID:	LST1/02
Isotype:	IgG1
Conjugate:	Unconjugated
Purification:	Protein A chromatography.
Concentration:	1 mg/ml
Purity:	> 95% (by SDS-PAGE).
Product Form:	Liquid
Formulation:	Supplied in Phosphate Buffered Saline, pH 7.4, with 15 mM Sodium Azide.
Storage:	Shipped at 4°C. Upon delivery aliquot and store at -20°C. Avoid freeze / thaw cycles.
Disclaimer:	This product is for research use only. It is not intended for diagnostic or therapeutic use.

## Anti-LST1 Antibody [LST1/02] (A85783)

Images:



Western Blotting analysis (non-reducing conditions) of LST1 in whole cell lysate of U937 human Caucasian histiocytic lymphoma cell line. Lane 1: Immunostaining with Isotype mouse IgG1 control (PPV-06). Lane 2-3: Immunostaining with Anti-LST1 Antibody (A85783 | two independent batches). Note: It migrates on SDS PAGE gels as approximately 25-28 kDa molecule.