

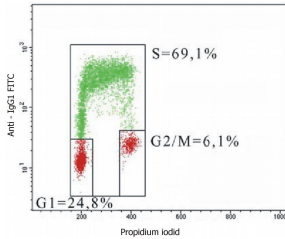
Anti-BrdU Antibody [MoBu-1] (A85813)

Specifications:

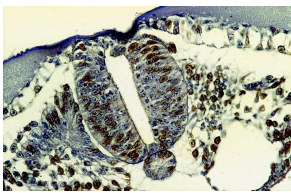
Name:	Anti-BrdU Antibody [MoBu-1]
Description:	Mouse monoclonal [MoBu-1] antibody to BrdU.
Specificity:	The antibody MoBu-1 reacts specifically with BrdU incorporated into DNA during S-phase of a cell cycle. The antibody MoBu-1 is also useful for detecting proliferating cells by flow cytometry or immunofluorescence staining. It reacts also specifically with 5-bromouridine (BrU).
Applications:	IHC-P, Flow Cytometry, ICC
Recommended Dilutions:	Flow Cytometry: 1-2 µg/ml, ICC: 2 µg/ml
Reactivity:	Species independent
Immunogen:	5-bromodeoxyuridine conjugated with hemocyanine.
Host:	Mouse
Clonality:	Monoclonal
Clone ID:	MoBu-1
Isotype:	IgG1
Conjugate:	Unconjugated
Purification:	Protein A chromatography.
Concentration:	1 mg/ml
Purity:	> 95% (by SDS-PAGE).
Product Form:	Liquid
Formulation:	Supplied in Phosphate Buffered Saline, pH 7.4, with 15 mM Sodium Azide.
Storage:	Shipped at 4°C. Upon delivery aliquot and store at -20°C. Avoid freeze / thaw cycles.
Disclaimer:	This product is for research use only. It is not intended for diagnostic or therapeutic use.

Anti-BrdU Antibody [MoBu-1] (A85813)

Images:



Flow cytometry analysis of 5-bromodeoxyuridin (BrdU) incorporation in CEM human acute lymphoblastic leukemia cell line using Anti-BrdU Antibody (A85813) (detection by Goat Anti-Mouse IgG1 Antibody FITC). The individual cell cycle phases (S-, G1-, G2/M-phase) are indicated in the figure.



Immunohistochemistry staining of bromodeoxyuridine-labeled cells (chick embryo; paraffin-embedded sections) with Anti-BrdU Antibody (A85813).