

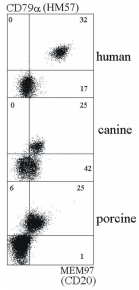
Anti-CD20 Antibody [MEM-97] - BSA and Azide free (A85848)

Specifications:

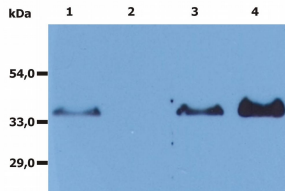
Name:	Anti-CD20 Antibody [MEM-97] - BSA and Azide free
Description:	Mouse monoclonal [MEM-97] antibody to CD20.
Specificity:	The antibody MEM-97 reacts with CD20 (Bp35), a 33-37 kDa non-glycosylated membrane receptor with four transmembrane domains, expressed on B lymphocytes (it is lost on plasma cells), follicular dendritic cells, and at low levels on peripheral blood T lymphocytes.
Applications:	Flow Cytometry, IP
Recommended Dilutions:	Flow Cytometry: 10 µg/ml
Reactivity:	Human, Porcine, Bovine
Immunogen:	Raji human Burkitt's lymphoma cell line.
Host:	Mouse
Clonality:	Monoclonal
Clone ID:	MEM-97
Isotype:	IgG1
Conjugate:	Unconjugated
Purification:	Protein A chromatography.
Concentration:	1 mg/ml
Purity:	> 95% (by SDS-PAGE).
Product Form:	Liquid
Formulation:	Supplied in Phosphate Buffered Saline, pH 7.4, without Sodium Azide (0.2 µm filter sterilized).
Storage:	Shipped at 4°C. Upon delivery aliquot and store at -20°C. Avoid freeze / thaw cycles.
Disclaimer:	This product is for research use only. It is not intended for diagnostic or therapeutic use.

Anti-CD20 Antibody [MEM-97] - BSA and Azide free (A85848)

Images:



Double staining of human, canine and porcine B lymphocytes with Anti-CD79a Antibody [HM57] and Anti-CD20 Antibody [MEM-97].



Immunoprecipitation of human CD20 from the whole cell lysate of RAJI human Burkitt lymphoma cell line. Western blot was immunostained with Anti-CD20 Antibody (rabbit polyclonal). Lane 1: Original lysate of RAJI cells. Lane 2: Immunoprecipitate by Isotypic mouse IgG1 control (PPV-06). Lane 3: Original lysate of RAJI cells. Lane 4: Immunoprecipitate by Anti-CD20 Antibody (A85848).