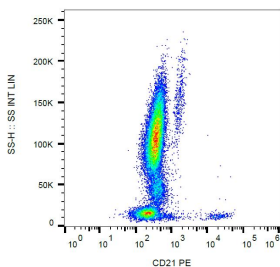


## Anti-CD21 Antibody [LT21] (PE) (A85850)

### Specifications:

|                        |  |
|------------------------|--|
| Name:                  | Anti-CD21 Antibody [LT21] (PE)   |
| Description:           | Mouse monoclonal [LT21] antibody to CD21 (PE).   |
| Specificity:           | This antibody reacts with an extracellular epitope of CD21, a 145 kDa transmembrane glycoprotein (complement C3d receptor - C3dR) expressed on B lymphocytes, follicular dendritic cells, some epithelial cells, and a subset of T lymphocytes. It is not expressed on immature B cells. |
| Applications:          | Flow Cytometry   |
| Recommended Dilutions: | Flow Cytometry: This reagent is designed for analysis of human blood cells using 20 $\mu$ l reagent / 100 $\mu$ l of whole blood or $10^6$ cells in a suspension.  |
| Reactivity:            | Human, Porcine, Bovine, Canine   |
| Immunogen:             | IM9 human B-lymphoblastoid cell line.  |
| Host:                  | Mouse  |
| Clonality:             | Monoclonal   |
| Clone ID:              | LT21   |
| Isotype:               | IgG1   |
| Conjugate:             | PE   |
| Purification:          | This antibody is conjugated with PE under optimum conditions. The conjugate is purified by size-exclusion chromatography.  |
| Product Form:          | Liquid   |
| Formulation:           | Supplied in Phosphate Buffered Saline with 15 mM Sodium Azide.   |
| Storage:               | Store in the dark at 2-8°C. Do not freeze!   |
| Disclaimer:            | This product is for research use only. It is not intended for diagnostic or therapeutic use.   |

### Images:



Surface staining of human peripheral blood leukocytes with Anti-CD21 Antibody (A85850).