

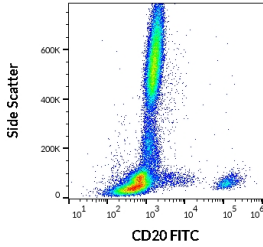
Anti-CD20 Antibody [LT20] (FITC) (A85857)

Specifications:

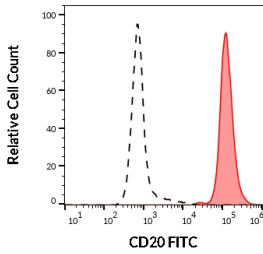
Name:	Anti-CD20 Antibody [LT20] (FITC)
Description:	Mouse monoclonal [LT20] antibody to CD20 (FITC).
Specificity:	This antibody reacts with an extracellular epitope of CD20, a 33-37 kDa non-glycosylated membrane receptor with four transmembrane domains, expressed on B lymphocytes (it is lost on plasma cells), follicular dendritic cells, and at low levels on peripheral blood T lymphocytes.
Applications:	Flow Cytometry
Recommended Dilutions:	Flow Cytometry: This reagent is designed for analysis of human blood cells using 20 µl reagent / 100 µl of whole blood or 10 ⁶ cells in a suspension.
Reactivity:	Human
Immunogen:	Normal human lymphocytes from a lymph node.
Host:	Mouse
Clonality:	Monoclonal
Clone ID:	LT20
Isotype:	IgG2a
Conjugate:	FITC
Purification:	This antibody is conjugated with FITC under optimum conditions. The conjugate is purified by size-exclusion chromatography.
Product Form:	Liquid
Formulation:	Supplied in Phosphate Buffered Saline with 15 mM Sodium Azide.
Storage:	Store in the dark at 2-8°C. Do not freeze!
Disclaimer:	This product is for research use only. It is not intended for diagnostic or therapeutic use.

Anti-CD20 Antibody [LT20] (FITC) (A85857)

Images:



Flow cytometric analysis of human peripheral whole blood stained with Anti-CD20 Antibody [LT20] (FITC) (20 μ l reagent / 100 μ l of peripheral whole blood).



Separation of human CD20 positive lymphocytes (red-filled) from neutrophil granulocytes (black-dashed) in flow cytometric analysis of human peripheral whole blood stained with Anti-CD20 Antibody [LT20] (FITC) (20 μ l reagent / 100 μ l of peripheral whole blood).