

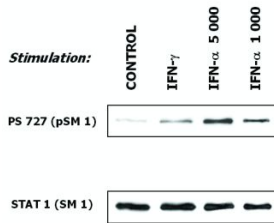
Anti-STAT1 Antibody [SM1] (A85870)

Specifications:

Name:	Anti-STAT1 Antibody [SM1]
Description:	Mouse monoclonal [SM1] antibody to STAT1.
Specificity:	The antibody SM1 recognizes an epitope included within amino acids 721-733 of STAT1, a 91 kDa transcriptional factor involved in a variety of systems including antiviral responses and interferon alpha (IFN-alpha) and gamma (IFN-gamma) signal transduction.
Applications:	IP, WB, IHC-P
Recommended Dilutions:	IHC-P: 5µg/ml, WB: 1-2 µg/ml
Reactivity:	Mouse, Human
Immunogen:	STAT1 peptide sequence 721-733 (DNLLPMSPEEFDE).
Host:	Mouse
Clonality:	Monoclonal
Clone ID:	SM1
Isotype:	IgG2b
Conjugate:	Unconjugated
Purification:	Protein A chromatography.
Concentration:	1 mg/ml
Purity:	> 95% (by SDS-PAGE).
Product Form:	Liquid
Formulation:	Supplied in Phosphate Buffered Saline, pH 7.4, with 15 mM Sodium Azide.
Storage:	Shipped at 4°C. Upon delivery aliquot and store at -20°C. Avoid freeze / thaw cycles.
Disclaimer:	This product is for research use only. It is not intended for diagnostic or therapeutic use.

Anti-STAT1 Antibody [SM1] (A85870)

Images:



Induction of phosphorylation of STAT1 at Ser727 in human malignant melanoma cells (short-term culture derived from a patient) in response to interferons. Subconfluent cells were serum-starved before exposure to activation dosages of IFN-gamma (10 ng/ml) and IFN-alpha (1000 IU/ml and 5000 IU/ml). Western blotting analysis of cell extracts shows detection of phosphorylated STAT1 (Ser727) by the Anti-STAT1 Antibody [PSM1] (upper panel) and total STAT1 level by the Anti-STAT1 Antibody [SM1] (lower panel).