

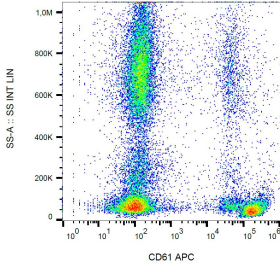
Anti-Integrin beta 3 Antibody [VIPL2] (APC) (A85910)

Specifications:

| | |
|------------------------|---|
| Name: | Anti-Integrin beta 3 Antibody [VIPL2] (APC) |
| Description: | Mouse monoclonal [VIPL2] antibody to Integrin beta 3 (APC). |
| Specificity: | The mouse monoclonal antibody VIPL2 recognizes CD61, a 90-110 kDa transmembrane glycoprotein of integrin family, expressed on platelets, megacaryocytes, osteoclasts, endothelial cells and other cell types, including leucocytes and smooth muscle cells. |
| Applications: | Flow Cytometry |
| Recommended Dilutions: | Flow Cytometry: This reagent is designed for analysis of human blood cells using 10 µl reagent / 100 µl of whole blood or 10 ⁶ cells in a suspension. |
| Reactivity: | Human, Non-Human Primates |
| Immunogen: | Unfortunately, this information is considered to be commercially sensitive. |
| Host: | Mouse |
| Clonality: | Monoclonal |
| Clone ID: | VIPL2 |
| Isotype: | IgG1 |
| Light Chains: | kappa |
| Conjugate: | APC |
| Purification: | This antibody is conjugated with APC under optimum conditions. The conjugate is purified by size-exclusion chromatography. |
| Product Form: | Liquid |
| Formulation: | Supplied in Phosphate Buffered Saline with 15 mM Sodium Azide. |
| Storage: | Store in the dark at 2-8°C. Do not freeze! |
| Disclaimer: | This product is for research use only. It is not intended for diagnostic or therapeutic use. |

Anti-Integrin beta 3 Antibody [VIPL2] (APC) (A85910)

Images:



Surface staining of human peripheral blood with Anti-CD61 Antibody (A85910).