

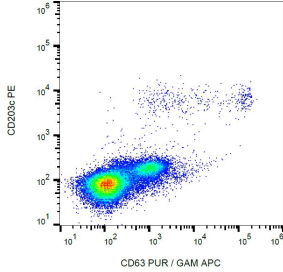
Anti-CD63 Antibody [MEM-259] (A85976)

Specifications:

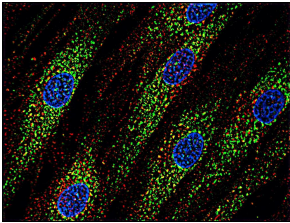
Name:	Anti-CD63 Antibody [MEM-259]
Description:	Mouse monoclonal [MEM-259] antibody to CD63.
Specificity:	This antibody reacts with an extracellular / luminal epitope of CD63, a 40-60 kDa tetraspan glycoprotein expressed by granulocytes, platelets, T cells, monocytes / macrophages, and endothelial cells. Cell surface exposition of CD63 is usually activation-dependent.
Applications:	Flow Cytometry, IP, IHC-P, ICC
Recommended Dilutions:	Flow Cytometry: 2 µg/ml, IHC-P: 10 µg/ml
Reactivity:	Human
Immunogen:	HPB-ALL T cell line.
Host:	Mouse
Clonality:	Monoclonal
Clone ID:	MEM-259
Isotype:	IgG1
Conjugate:	Unconjugated
Purification:	Protein A chromatography.
Concentration:	1 mg/ml
Purity:	> 95% (by SDS-PAGE).
Product Form:	Liquid
Formulation:	Supplied in Phosphate Buffered Saline, pH 7.4, with 15 mM Sodium Azide.
Storage:	Shipped at 4°C. Upon delivery aliquot and store at -20°C. Avoid freeze / thaw cycles.
Disclaimer:	This product is for research use only. It is not intended for diagnostic or therapeutic use.

Anti-CD63 Antibody [MEM-259] (A85976)

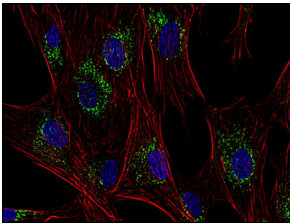
Images:



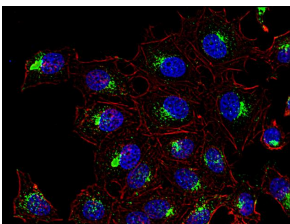
Flow cytometry analysis of IgE-activated peripheral blood stained with Anti-CD63 Antibody (A85976).



Immunofluorescence staining of human skin fibroblasts with Anti-CD63 Antibody (A85976 | green) after co-incubation of living cells with human Transferrin - Dyomics 547 (red); cell nuclei stained with DAPI (blue).



Immunofluorescence staining of CD63 in human primary fibroblasts using Anti-CD63 Antibody (A85976 | green). Actin cytoskeleton was decorated by phalloidin (red) and cell nuclei stained with DAPI (blue).



Immunofluorescence staining of CD63 in human HeLa cell line using Anti-CD63 Antibody (A85976 | green). Actin cytoskeleton was decorated by phalloidin (red) and cell nuclei stained with DAPI (blue).