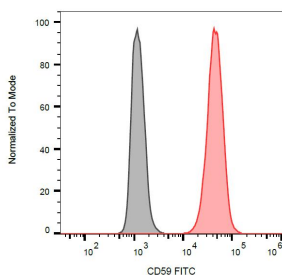


## Anti-CD59 Antibody [MEM-43] (FITC) (A85985)

### Specifications:

Name:	Anti-CD59 Antibody [MEM-43] (FITC)
Description:	Mouse monoclonal [MEM-43] antibody to CD59 (FITC).
Specificity:	This antibody reacts with a well defined epitope (W40, R-53) on CD59, a 18-20 kDa GPI-anchored glycoprotein expressed on the surface of all hematopoietic cells - it is widely present on cells in all tissues. This antibody does not compete with MEM-43/5.
Applications:	Flow Cytometry
Recommended Dilutions:	Flow Cytometry: This reagent is designed for analysis of human blood cells using 20 $\mu$ l reagent / 100 $\mu$ l of whole blood or $10^6$ cells in a suspension.
Reactivity:	Human
Immunogen:	Thymocytes and T lymphocytes.
Host:	Mouse
Clonality:	Monoclonal
Clone ID:	MEM-43
Isotype:	IgG2a
Conjugate:	FITC
Purification:	This antibody is conjugated with FITC under optimum conditions. The conjugate is purified by size-exclusion chromatography.
Product Form:	Liquid
Formulation:	Supplied in Phosphate Buffered Saline with 15 mM Sodium Azide.
Storage:	Store in the dark at 2-8°C. Do not freeze!
Disclaimer:	This product is for research use only. It is not intended for diagnostic or therapeutic use.

### Images:



Surface staining of HL-60 (positive) and SP2 (negative) cells with Anti-CD59 Antibody (A85985).