

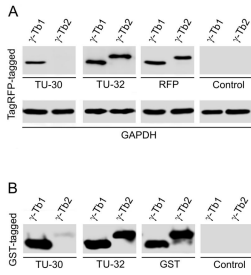
Anti-gamma Tubulin Antibody [TU-30] (A86254)

Specifications:

Name:	Anti-gamma Tubulin Antibody [TU-30]
Description:	Mouse monoclonal [TU-30] antibody to gamma Tubulin.
Specificity:	This antibody recognizes the C terminus of human gamma Tubulin, a 48 kDa structural constituent of cytoskeleton and microtubule organizing center (MTOC). The epitope is located in the amino acid sequence TRPDYI (a.a. 439-444 in human), which is present on human gamma Tubulin 1 but not on human gamma Tubulin 2.
Applications:	ICC, WB, Flow Cytometry
Recommended Dilutions:	ICC: 1-2 µg/ml, WB: 1-2 µg/ml
Reactivity:	Human, Porcine, Mouse, Rat, Bovine, Chicken, Protozoa, Plants
Immunogen:	C-terminal peptide of gamma-tubulin counjugated to KLH.
Host:	Mouse
Clonality:	Monoclonal
Clone ID:	TU-30
Isotype:	IgG1
Conjugate:	Unconjugated
Purification:	Protein A chromatography.
Concentration:	1 mg/ml
Purity:	> 95% (by SDS-PAGE).
Product Form:	Liquid
Formulation:	Supplied in Phosphate Buffered Saline, pH 7.4, with 15 mM Sodium Azide.
Storage:	Shipped at 4°C. Upon delivery aliquot and store at -20°C. Avoid freeze / thaw cycles.
Disclaimer:	This product is for research use only. It is not intended for diagnostic or therapeutic use.

Anti-gamma Tubulin Antibody [TU-30] (A86254)

Images:



Differential reactivity of monoclonal antibodies to γ -tubulin with human γ -tubulin isotypes. (A) Immunoblots of total cell lysates from SH-SY5Y cells, expressing TagRFP-tagged human γ -tubulin 1 (γ -Tb1) or γ -tubulin 2 (γ -Tb2), probed with Abs to γ -tubulin (TU-30, TU-32), TagRFP (RFP) and GAPDH. In control samples, only secondary anti-mouse Ab was applied. (B) Immunoblots of immobilized GST-tagged human C-terminal regions (a.a. 362-451) of γ -Tb1 or γ -Tb2 probed with Abs to γ -tubulin (TU-30, TU-32) and GST. In control samples, only secondary anti-mouse Ab was applied.