

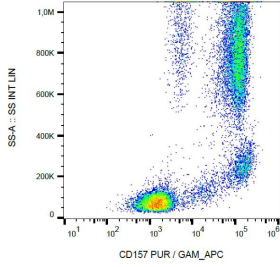
## Anti-CD157 Antibody [SY11B5] (A86306)

### Specifications:

|                        |   |
|------------------------|---|
| Name:                  | Anti-CD157 Antibody [SY11B5]  |
| Description:           | Mouse monoclonal [SY11B5] antibody to CD157.  |
| Specificity:           | The mouse monoclonal antibody SY11B5 recognizes CD157, an approximately 45 kDa GPI-anchored protein expressed mainly on monocytes, macrophages, granulocytes and bone marrow stromal cells. |
| Applications:          | Flow Cytometry, IP, WB, IHC-Fr  |
| Recommended Dilutions: | IHC: 5-10 µg/ml, Flow Cytometry: 1-12 µg/ml   |
| Reactivity:            | Human, Non-Human Primates   |
| Immunogen:             | Human CD157.  |
| Host:                  | Mouse   |
| Clonality:             | Monoclonal  |
| Clone ID:              | SY11B5  |
| Isotype:               | IgG1  |
| Light Chains:          | kappa   |
| Conjugate:             | Unconjugated  |
| Purification:          | Protein A chromatography.   |
| Concentration:         | 1 mg/ml   |
| Purity:                | > 95% (by SDS-PAGE).  |
| Product Form:          | Liquid  |
| Formulation:           | Supplied in Phosphate Buffered Saline, pH 7.4, with 15 mM Sodium Azide.   |
| Storage:               | Shipped at 4°C. Upon delivery aliquot and store at -20°C. Avoid freeze / thaw cycles.   |
| Disclaimer:            | This product is for research use only. It is not intended for diagnostic or therapeutic use.  |

# Anti-CD157 Antibody [SY11B5] (A86306)

## Images:



Surface staining of human peripheral blood leukocytes with Anti-CD157 Antibody (A86306).